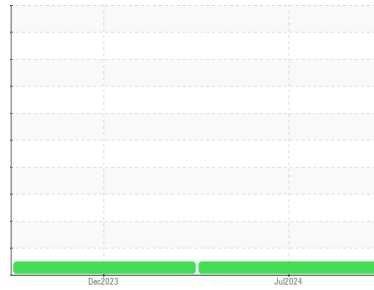




OIL ANALYSIS REPORT

Area
S-460
 Machine Id
KAESER 3456 - V-PET
 Component
Compressor

Sample Rating Trend



DIAGNOSIS

Recommendation
 Resample at the next service interval to monitor.

Wear
 All component wear rates are normal.

Contamination
 There is no indication of any contamination in the oil.

Fluid Condition
 The AN level is acceptable for this fluid. The condition of the oil is suitable for further service.

SAMPLE INFORMATION

	method	limit/base	current	history1	history2
Sample Number	Client Info		UDI0000458	UCH06037941	---
Sample Date	Client Info		11 Jul 2024	13 Dec 2023	---
Machine Age	hrs	Client Info	21330	17527	---
Oil Age	hrs	Client Info	3803	5800	---
Oil Changed	Client Info		N/A	Changed	---
Sample Status			NORMAL	NORMAL	---

CONTAMINATION

	method	limit/base	current	history1	history2
Water	WC Method	>0.05	NEG	NEG	---

WEAR METALS

	method	limit/base	current	history1	history2
Iron	ppm	ASTM D5185m >50	<1	<1	---
Chromium	ppm	ASTM D5185m >10	<1	<1	---
Nickel	ppm	ASTM D5185m >3	<1	<1	---
Titanium	ppm	ASTM D5185m >3	<1	0	---
Silver	ppm	ASTM D5185m >2	0	0	---
Aluminum	ppm	ASTM D5185m >10	3	1	---
Lead	ppm	ASTM D5185m >10	<1	0	---
Copper	ppm	ASTM D5185m >50	3	5	---
Tin	ppm	ASTM D5185m >10	<1	<1	---
Vanadium	ppm	ASTM D5185m	0	0	---
Cadmium	ppm	ASTM D5185m	<1	<1	---

ADDITIVES

	method	limit/base	current	history1	history2
Boron	ppm	ASTM D5185m	0	0	---
Barium	ppm	ASTM D5185m 90	<1	2	---
Molybdenum	ppm	ASTM D5185m	<1	<1	---
Manganese	ppm	ASTM D5185m	<1	<1	---
Magnesium	ppm	ASTM D5185m 90	2	<1	---
Calcium	ppm	ASTM D5185m 2	0	<1	---
Phosphorus	ppm	ASTM D5185m	6	20	---
Zinc	ppm	ASTM D5185m	4	0	---
Sulfur	ppm	ASTM D5185m	19376	21119	---

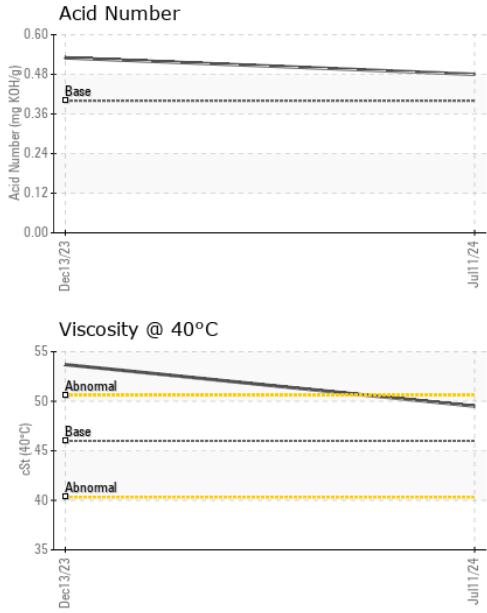
CONTAMINANTS

	method	limit/base	current	history1	history2
Silicon	ppm	ASTM D5185m >25	0	<1	---
Sodium	ppm	ASTM D5185m	0	0	---
Potassium	ppm	ASTM D5185m >20	1	<1	---

FLUID DEGRADATION

	method	limit/base	current	history1	history2
Acid Number (AN)	mg KOH/g	ASTM D8045 0.4	0.48	0.53	---

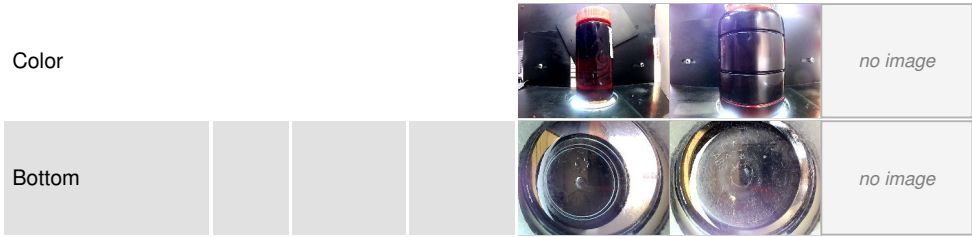
OIL ANALYSIS REPORT



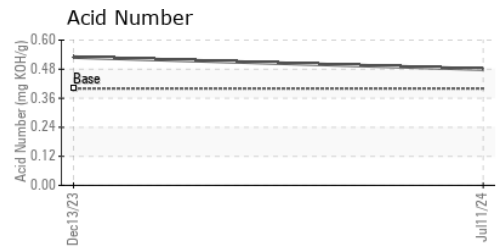
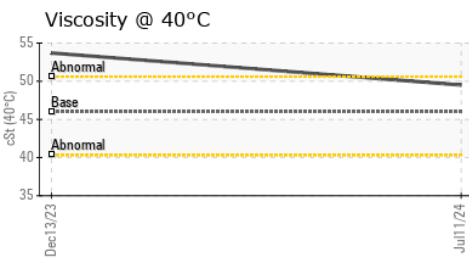
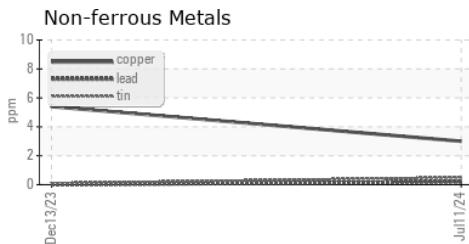
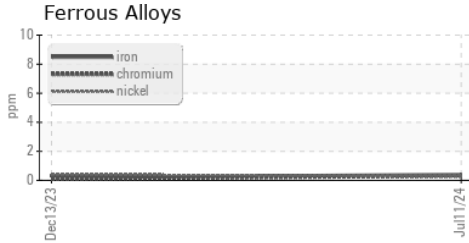
VISUAL	method	limit/base	current	history1	history2
White Metal	scalar	*Visual	NONE	NONE	---
Yellow Metal	scalar	*Visual	NONE	NONE	---
Precipitate	scalar	*Visual	NONE	NONE	---
Silt	scalar	*Visual	NONE	NONE	---
Debris	scalar	*Visual	NONE	NONE	---
Sand/Dirt	scalar	*Visual	NONE	NONE	---
Appearance	scalar	*Visual	NORML	NORML	---
Odor	scalar	*Visual	NORML	NORML	---
Emulsified Water	scalar	*Visual	>0.05	NEG	---
Free Water	scalar	*Visual		NEG	---

FLUID PROPERTIES	method	limit/base	current	history1	history2	
Visc @ 40°C	cSt	ASTM D445	46	49.5	53.7	---

SAMPLE IMAGES	method	limit/base	current	history1	history2
---------------	--------	------------	---------	----------	----------



GRAPHS



Laboratory : WearCheck USA - 501 Madison Ave., Cary, NC 27513
Sample No. : UDI0000458 **Received** : 17 Jul 2024
Lab Number : **06239241** **Tested** : 18 Jul 2024
Unique Number : 11128075 **Diagnosed** : 18 Jul 2024 - Wes Davis
Test Package : IND 2

DELTA INDUSTRIES - DOWNERS GROVE
 2201 CURTISS STREET
 DOWNERS GROVE, IL
 US 60515
 Contact: MICHAEL FERRIS

To discuss this sample report, contact Customer Service at 1-800-237-1369.

* - Denotes test methods that are outside of the ISO 17025 scope of accreditation.

Statements of conformity to specifications are based on the simple acceptance decision rule (JCGM 106:2012)

T:
 F: (630)960-3931