

Area

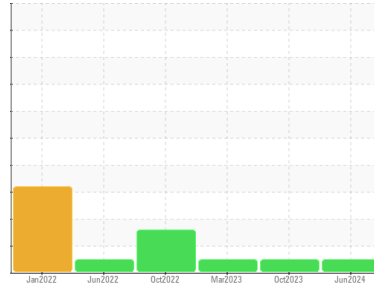
PAL 44

Machine Id

SULLIVAN PALATEK 21GE0002378 - GRAND TRAVERSE RESORT

Component

Compressor



DIAGNOSIS

Recommendation

The filter change at the time of sampling has been noted. Resample at the next service interval to monitor.

Wear

All component wear rates are normal.

Contamination

Moderate concentration of visible dirt/debris present in the oil.

Fluid Condition

The AN level is acceptable for this fluid. The condition of the oil is suitable for further service.

SAMPLE INFORMATION method limit/base current history1 history2

Sample Number	Client Info	UCS06239286	UCS05973128	UCS05830302	
Sample Date	Client Info	24 Jun 2024	03 Oct 2023	10 Mar 2023	
Machine Age	hrs	Client Info	10428	7671	5463
Oil Age	hrs	Client Info	2757	3517	1309
Oil Changed	Client Info	Not Changed	Changed	Not Changed	
Sample Status		NORMAL	NORMAL	NORMAL	

CONTAMINATION method limit/base current history1 history2

Water	WC Method	>0.1	NEG	NEG	NEG
-------	-----------	------	------------	-----	-----

WEAR METALS method limit/base current history1 history2

Iron	ppm	ASTM D5185m	>50	<1	0	0
Chromium	ppm	ASTM D5185m	>10	<1	0	0
Nickel	ppm	ASTM D5185m		<1	<1	0
Titanium	ppm	ASTM D5185m		<1	0	0
Silver	ppm	ASTM D5185m		0	0	0
Aluminum	ppm	ASTM D5185m	>25	3	0	0
Lead	ppm	ASTM D5185m	>25	<1	<1	0
Copper	ppm	ASTM D5185m	>50	<1	<1	0
Tin	ppm	ASTM D5185m	>15	<1	0	0
Vanadium	ppm	ASTM D5185m		0	0	0
Cadmium	ppm	ASTM D5185m		<1	0	0

ADDITIVES method limit/base current history1 history2

Boron	ppm	ASTM D5185m	0	0	0	0
Barium	ppm	ASTM D5185m	0.3	<1	0	0
Molybdenum	ppm	ASTM D5185m	0	<1	0	0
Manganese	ppm	ASTM D5185m	0.3	<1	0	0
Magnesium	ppm	ASTM D5185m	0.4	<1	0	<1
Calcium	ppm	ASTM D5185m	0	0	0	<1
Phosphorus	ppm	ASTM D5185m	689	516	563	642
Zinc	ppm	ASTM D5185m	0	<1	0	0
Sulfur	ppm	ASTM D5185m	1237	558	682	963

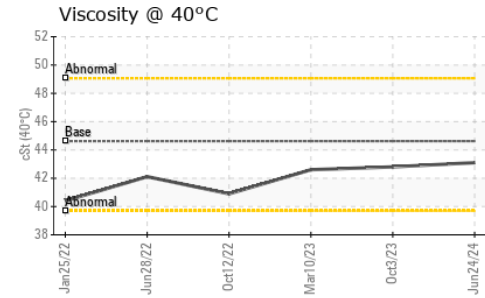
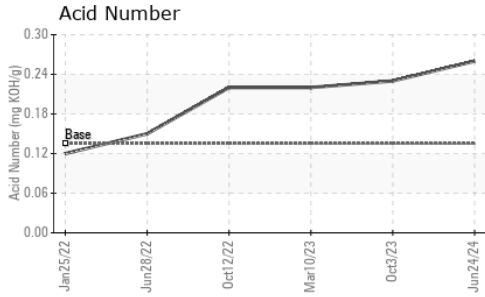
CONTAMINANTS method limit/base current history1 history2

Silicon	ppm	ASTM D5185m	>25	5	1	2
Sodium	ppm	ASTM D5185m		0	0	0
Potassium	ppm	ASTM D5185m	>20	1	1	<1

FLUID DEGRADATION method limit/base current history1 history2

Acid Number (AN)	mg KOH/g	ASTM D8045	0.135	0.26	0.23	0.22
------------------	----------	------------	-------	-------------	------	------

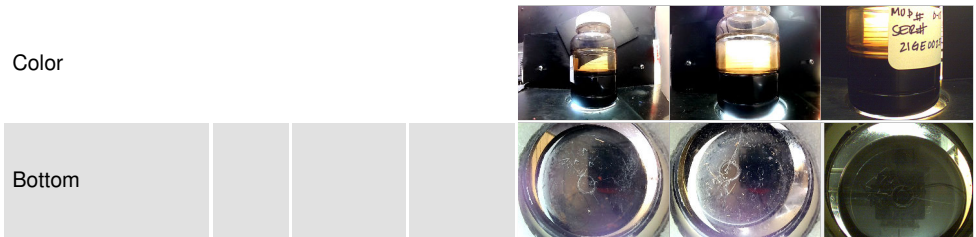
OIL ANALYSIS REPORT



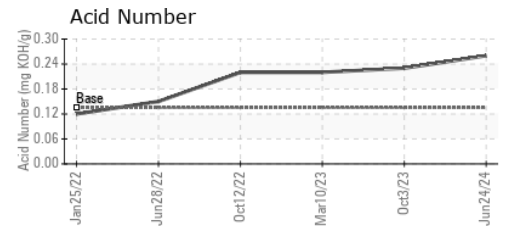
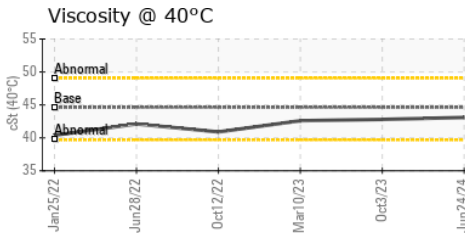
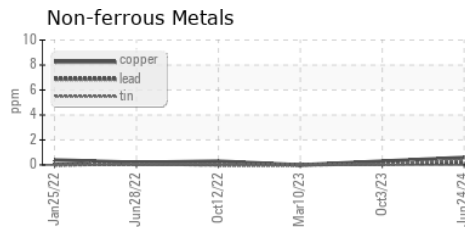
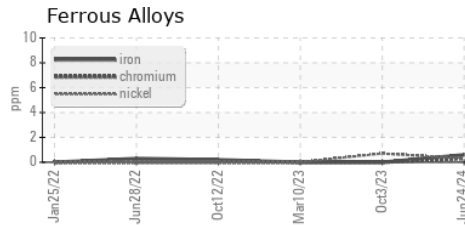
VISUAL	method	limit/base	current	history1	history2
White Metal	scalar	*Visual	NONE	NONE	NONE
Yellow Metal	scalar	*Visual	NONE	NONE	NONE
Precipitate	scalar	*Visual	NONE	NONE	NONE
Silt	scalar	*Visual	NONE	NONE	NONE
Debris	scalar	*Visual	NONE	MODER	NONE
Sand/Dirt	scalar	*Visual	NONE	NONE	NONE
Appearance	scalar	*Visual	NORML	NORML	NORML
Odor	scalar	*Visual	NORML	NORML	NORML
Emulsified Water	scalar	*Visual	>0.1	NEG	NEG
Free Water	scalar	*Visual		NEG	NEG

FLUID PROPERTIES	method	limit/base	current	history1	history2
Visc @ 40°C	cSt	ASTM D445	44.62	43.1	42.8

SAMPLE IMAGES	method	limit/base	current	history1	history2
---------------	--------	------------	---------	----------	----------



GRAPHS



Certificate L2367

Laboratory : WearCheck USA - 501 Madison Ave., Cary, NC 27513
Sample No. : UCS06239286
Lab Number : 06239286
Unique Number : 11128120
Test Package : IND 2

Received : 17 Jul 2024
Tested : 18 Jul 2024
Diagnosed : 19 Jul 2024 - Sean Felton

To discuss this sample report, contact Customer Service at 1-800-237-1369.

* - Denotes test methods that are outside of the ISO 17025 scope of accreditation.

Statements of conformity to specifications are based on the simple acceptance decision rule (JCGM 106:2012)

AIRLEX

TRAVERSE CITY, MI
 US 49686
 Contact: MIKE
 office@airlex.com
 T: (231)929-1601
 F: