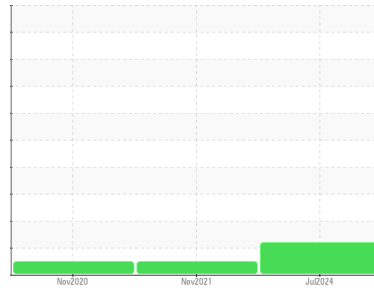




# FUEL REPORT

## Sample Rating Trend



ISO



Area

**Paul G. Blazer**

Machine Id

**[Paul G. Blazer] Diesel - #3 Port**

Component

**Diesel Fuel**

Fluid

**No.2 DIESEL FUEL (ULTRALOW SULPHUR) (21617 GAL)**

### DIAGNOSIS

#### Recommendation

We advise that you filter this fluid before use. All laboratory tests indicate that this sample meets specifications for No.2 ultra-low-sulfur diesel fuel.

#### Corrosion

All metal levels are normal indicating no corrosion in the system.

#### Contaminants

There is a moderate amount of particulates present in the fuel. The water content is negligible. There is no bacteria or fungus (yeast and/or mold) indicated in the sample.

#### Fuel Condition

Sulfur value derived by ASTM D5453 method for ULSD validation. Sulfur level is acceptable for ULSD specification.

SAMPLE INFORMATION		method	limit/base	current	history1	history2
Sample Number	Client Info			<b>WC0600234</b>	WC0600204	RP199260
Sample Date	Client Info			<b>09 Jul 2024</b>	28 Nov 2021	03 Nov 2020
Machine Age	hrs	Client Info		<b>0</b>	0	0
Sample Status				<b>ABNORMAL</b>	NORMAL	NORMAL

PHYSICAL PROPERTIES		method	limit/base	current	history1	history2
ASTM Color	scalar	*ASTM D1500		<b>L4.5</b>	L5.0	---
Visc @ 40°C	cSt	ASTM D445	3.0	<b>2.46</b>	2.38	2.23

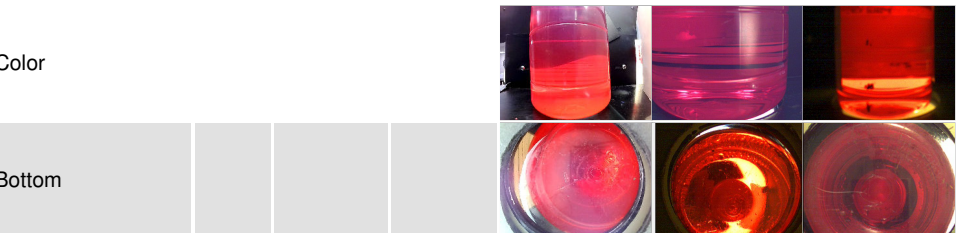
SULFUR CONTENT		method	limit/base	current	history1	history2
Sulfur	ppm	ASTM D5185m	10	<b>4</b>	3	0
Sulfur (UVF)	ppm	ASTM D5453		<b>8</b>	6	---

CONTAMINANTS		method	limit/base	current	history1	history2
Silicon	ppm	ASTM D5185m	<1.0	<b>&lt;1</b>	0	<1
Sodium	ppm	ASTM D5185m	<0.1	<b>&lt;1</b>	0	<1
Potassium	ppm	ASTM D5185m	<0.1	<b>0</b>	<1	0
Water	%	ASTM D6304	<0.05	<b>0.003</b>	0.004	0.003
ppm Water	ppm	ASTM D6304	<500	<b>34</b>	40.5	35.7
% Gasoline	%	*In-House	<0.50	<b>0.0</b>	0.0	---
% Biodiesel	%	*In-House	<20.0	<b>0.0</b>	1.8	---

FLUID CLEANLINESS		method	limit/base	current	history1	history2
Particles >4µm		ASTM D7647	>2500	<b>▲ 4413</b>	1996	---
Particles >6µm		ASTM D7647	>640	<b>▲ 896</b>	373	---
Particles >14µm		ASTM D7647	>80	<b>59</b>	25	---
Particles >21µm		ASTM D7647	>20	<b>12</b>	6	---
Particles >38µm		ASTM D7647	>4	<b>1</b>	0	---
Particles >71µm		ASTM D7647	>3	<b>0</b>	0	---
Oil Cleanliness		ISO 4406 (c)	>18/16/13	<b>▲ 19/17/13</b>	18/16/12	---

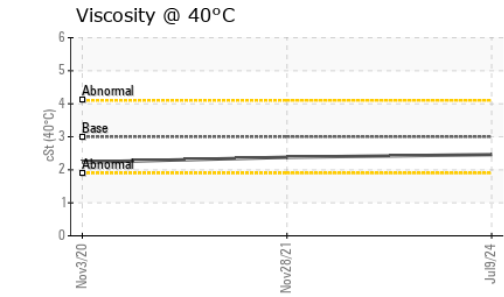
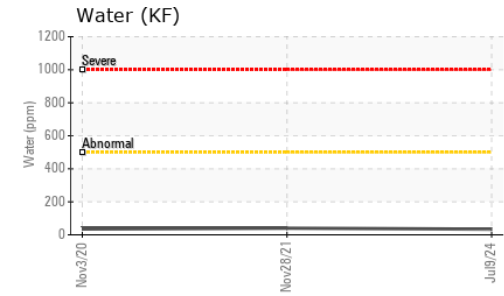
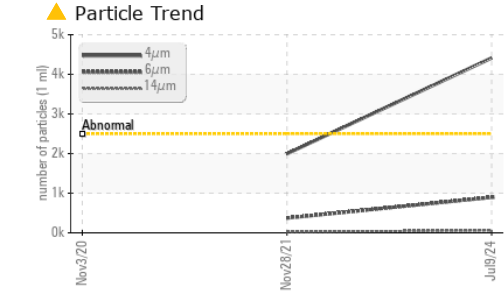
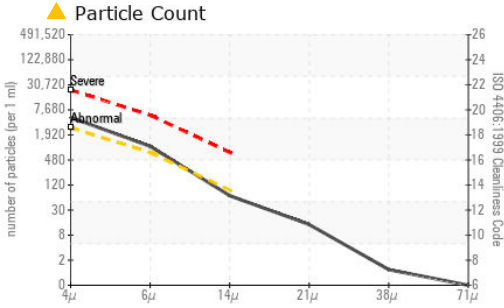
HEAVY METALS		method	limit/base	current	history1	history2
Aluminum	ppm	ASTM D5185m	<0.1	<b>0</b>	0	0
Nickel	ppm	ASTM D5185m	<0.1	<b>0</b>	0	<1
Lead	ppm	ASTM D5185m	<0.1	<b>0</b>	0	<1
Vanadium	ppm	ASTM D5185m	<0.1	<b>0</b>	0	<1
Iron	ppm	ASTM D5185m	<0.1	<b>0</b>	0	0
Calcium	ppm	ASTM D5185m	<0.1	<b>0</b>	0	0
Magnesium	ppm	ASTM D5185m	<0.1	<b>2</b>	0	<1
Phosphorus	ppm	ASTM D5185m	<0.1	<b>&lt;1</b>	5	0
Zinc	ppm	ASTM D5185m	<0.1	<b>1</b>	0	0

SAMPLE IMAGES		method	limit/base	current	history1	history2
---------------	--	--------	------------	---------	----------	----------

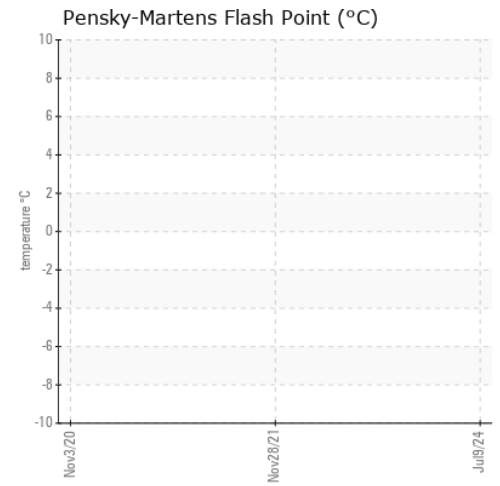




# FUEL REPORT



## GRAPHS



Certificate L2367

**Laboratory** : WearCheck USA - 501 Madison Ave., Cary, NC 27513  
**Sample No.** : WC0600234      **Received** : 17 Jul 2024  
**Lab Number** : 06239531      **Tested** : 18 Jul 2024  
**Unique Number** : 11128365      **Diagnosed** : 19 Jul 2024 - Elizabeth Valachovic  
**Test Package** : DF-5 ( Additional Tests: Screen )

**MARATHON PETROLEUM CO.**  
 101 12TH ST  
 CATLETTSBURG, KY  
 US 41169  
 Contact: CORY GUMBERT  
 cagumbert@marathonpetroleum.com

To discuss this sample report, contact Customer Service at 1-800-237-1369.

\* - Denotes test methods that are outside of the ISO 17025 scope of accreditation.

Statements of conformity to specifications are based on the simple acceptance decision rule (JCGM 106:2012)

T: (606)585-3950

F: x: