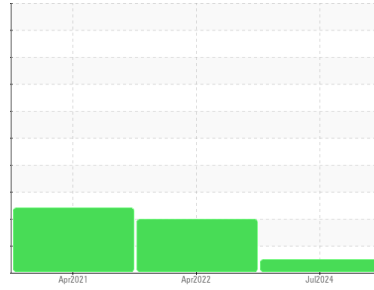




OIL ANALYSIS REPORT

Sample Rating Trend



NORMAL



Area

Powerblock

Machine Id

Induced Draft Fan

Component

Non-Drive End Bearing

Fluid

ROYAL PURPLE SYNFILM GT 68 (--- GAL)

DIAGNOSIS

Recommendation

Resample at the next service interval to monitor.

Wear

All component wear rates are normal.

Contamination

There is no indication of any contamination in the oil.

Fluid Condition

The AN level is acceptable for this fluid. The condition of the oil is suitable for further service.

SAMPLE INFORMATION

	method	limit/base	current	history1	history2
Sample Number	Client Info		WC0839385	WC0539364	RP0014763
Sample Date	Client Info		10 Jul 2024	11 Apr 2022	05 Apr 2021
Machine Age	hrs	Client Info	26280	26280	0
Oil Age	hrs	Client Info	26280	8760	0
Oil Changed		Client Info	N/A	Changed	N/A
Sample Status			NORMAL	ABNORMAL	ABNORMAL

CONTAMINATION

	method	limit/base	current	history1	history2
Water	WC Method	>2	NEG	NEG	NEG

WEAR METALS

	method	limit/base	current	history1	history2
Iron	ppm	ASTM D5185m >84	59	3	3
Chromium	ppm	ASTM D5185m >20	0	0	0
Nickel	ppm	ASTM D5185m >3	0	0	<1
Titanium	ppm	ASTM D5185m	<1	0	0
Silver	ppm	ASTM D5185m	0	0	0
Aluminum	ppm	ASTM D5185m >3	<1	<1	0
Lead	ppm	ASTM D5185m >143	144	87	132
Copper	ppm	ASTM D5185m >13	1	10	▲ 27
Tin	ppm	ASTM D5185m >41	3	2	2
Antimony	ppm	ASTM D5185m	---	---	0
Vanadium	ppm	ASTM D5185m	0	0	0
Cadmium	ppm	ASTM D5185m	0	0	0

ADDITIVES

	method	limit/base	current	history1	history2
Boron	ppm	ASTM D5185m	0	<1	0
Barium	ppm	ASTM D5185m	0	2	0
Molybdenum	ppm	ASTM D5185m	0	0	0
Manganese	ppm	ASTM D5185m	<1	<1	<1
Magnesium	ppm	ASTM D5185m 90	66	40	0
Calcium	ppm	ASTM D5185m	17	7	14
Phosphorus	ppm	ASTM D5185m	18	63	120
Zinc	ppm	ASTM D5185m	23	30	29
Sulfur	ppm	ASTM D5185m	20982	12575	1230

CONTAMINANTS

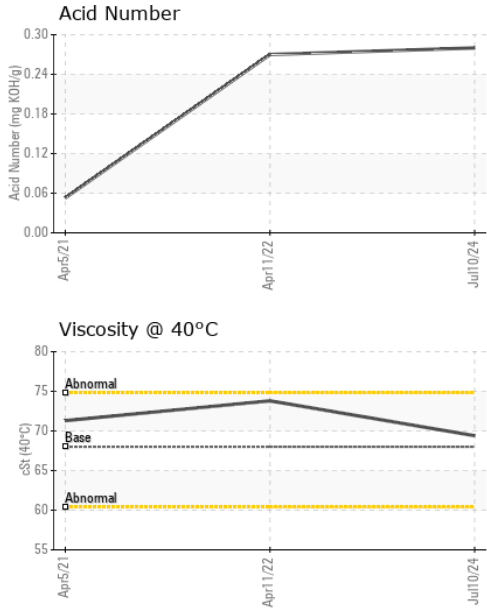
	method	limit/base	current	history1	history2
Silicon	ppm	ASTM D5185m >15	14	▲ 29	▲ 31
Sodium	ppm	ASTM D5185m	3	0	0
Potassium	ppm	ASTM D5185m >20	<1	1	0

FLUID DEGRADATION

	method	limit/base	current	history1	history2
Acid Number (AN)	mg KOH/g	ASTM D8045	0.28	0.27	0.053



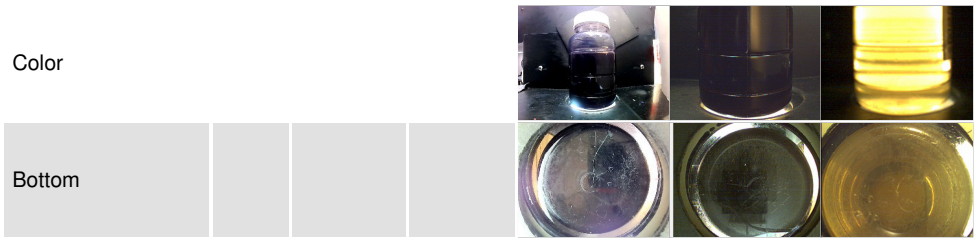
OIL ANALYSIS REPORT



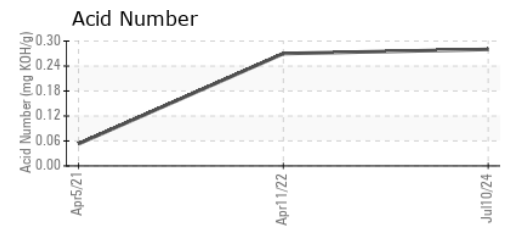
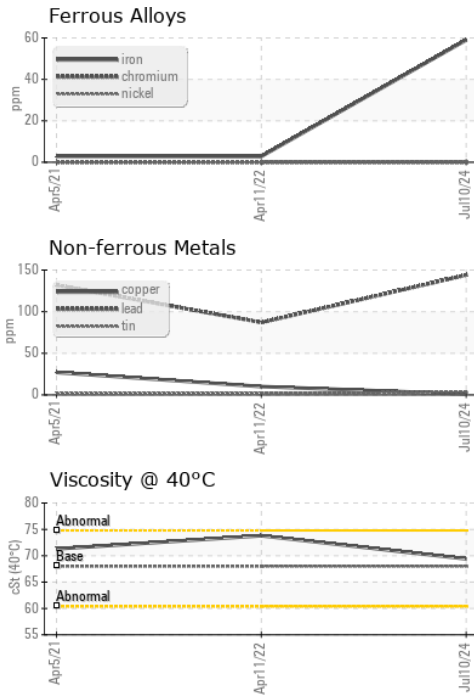
VISUAL	method	limit/base	current	history1	history2
White Metal	scalar	*Visual	NONE	NONE	NONE
Yellow Metal	scalar	*Visual	NONE	NONE	NONE
Precipitate	scalar	*Visual	NONE	NONE	NONE
Silt	scalar	*Visual	NONE	LIGHT	NONE
Debris	scalar	*Visual	NONE	NONE	▲ MODER
Sand/Dirt	scalar	*Visual	NONE	NONE	NONE
Appearance	scalar	*Visual	NORML	NORML	NORML
Odor	scalar	*Visual	NORML	NORML	NORML
Emulsified Water	scalar	*Visual	>2	NEG	NEG
Free Water	scalar	*Visual		NEG	NEG

FLUID PROPERTIES	method	limit/base	current	history1	history2
Visc @ 40°C	cSt	ASTM D445 68	69.4	73.8	71.3

SAMPLE IMAGES	method	limit/base	current	history1	history2
---------------	--------	------------	---------	----------	----------



GRAPHS



Laboratory : WearCheck USA - 501 Madison Ave., Cary, NC 27513
Sample No. : WC0839385 **Received** : 17 Jul 2024
Lab Number : 06239611 **Tested** : 18 Jul 2024
Unique Number : 11128445 **Diagnosed** : 19 Jul 2024 - Don Baldrige
Test Package : IND 2

VEOLIA ENERGY - FRANKLIN
 3465 HWY 198
 CARNESVILLE, GA
 US 30521
 Contact: JOHNNY STONE
 johnny.stone@veolia.com

To discuss this sample report, contact Customer Service at 1-800-237-1369.
 * - Denotes test methods that are outside of the ISO 17025 scope of accreditation.
 Statements of conformity to specifications are based on the simple acceptance decision rule (JCGM 106:2012)