



# RAPPORT D'ANALYSE D'HUILE

Sample Rating Trend

EAU

Secteur

**M. SULLIVAN AND SON [02574356]**

Identité de la machine

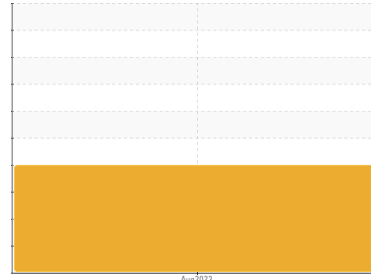
**JOHN DEERE 310SL 2711 (S/N 1T0310SLELF388018)**

Composant

**Système hydraulique**

Fluide

**PANOLIN HLP SYNTH 68 (126 LTR)**



## DIAGNOSTIC

### ▲ Recommendation

We advise that you check for the source of water entry. We recommend you service the filters on this component. We recommend an early resample to monitor this condition.

### Usure

All component wear rates are normal.

### ▲ Contamination

There is a moderate amount of silt (particulates < 14 microns in size) present in the oil. There is a light concentration (<5.0%) of mineral oil present in the fluid. There is a moderate concentration of water present in the oil. The system cleanliness is above the acceptable limit for the target ISO 4406 cleanliness code.

### État Du Fluide

The AN level is acceptable for this fluid. The oil is still serviceable provided that the contaminant(s) can be reduced to acceptable levels.

INFORMATION SUR L'ÉCHANTILLON		methode	limite/base	actuel	passé1	passé2
Numéro d'échant.	Client Info			<b>WC</b>	---	---
Date d'échant.	Client Info			<b>01 Aug 2023</b>	---	---
Âge d la Machine	hrs	Client Info		<b>1462</b>	---	---
Âge de l'huile	hrs	Client Info		<b>0</b>	---	---
Huile changée	Client Info			<b>N/A</b>	---	---
Statut de l'échant.				<b>ABNORMAL</b>	---	---

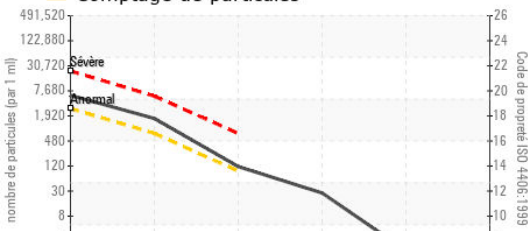
MÉTAUX D'USURE		methode	limite/base	actuel	passé1	passé2
Fer	ppm	ASTM D5185(m)	>20	<b>0</b>	---	---
Chrome	ppm	ASTM D5185(m)	>10	<b>0</b>	---	---
Nickel	ppm	ASTM D5185(m)	>10	<b>0</b>	---	---
Titane	ppm	ASTM D5185(m)		<b>2</b>	---	---
Argent	ppm	ASTM D5185(m)		<b>0</b>	---	---
Aluminium	ppm	ASTM D5185(m)	>10	<b>&lt;1</b>	---	---
Plomb	ppm	ASTM D5185(m)	>10	<b>0</b>	---	---
Cuivre	ppm	ASTM D5185(m)	>75	<b>&lt;1</b>	---	---
Étain	ppm	ASTM D5185(m)	>10	<b>0</b>	---	---
Antimoine	ppm	ASTM D5185(m)		<b>0</b>	---	---
Vanadium	ppm	ASTM D5185(m)		<b>0</b>	---	---
Béryllium	ppm	ASTM D5185(m)		<b>0</b>	---	---
Cadmium	ppm	ASTM D5185(m)		<b>0</b>	---	---

ADDITIFS		methode	limite/base	actuel	passé1	passé2
Bore	ppm	ASTM D5185(m)	0	<b>5</b>	---	---
Baryum	ppm	ASTM D5185(m)	0	<b>0</b>	---	---
Molybdène	ppm	ASTM D5185(m)	0	<b>0</b>	---	---
Manganèse	ppm	ASTM D5185(m)	0	<b>0</b>	---	---
Magnésium	ppm	ASTM D5185(m)	0	<b>&lt;1</b>	---	---
Calcium	ppm	ASTM D5185(m)	0	<b>&lt;1</b>	---	---
Phosphore	ppm	ASTM D5185(m)	1800	<b>1534</b>	---	---
Zinc	ppm	ASTM D5185(m)	0	<b>4</b>	---	---
Soufre	ppm	ASTM D5185(m)	1450	<b>530</b>	---	---
Lithium	ppm	ASTM D5185(m)		<b>&lt;1</b>	---	---

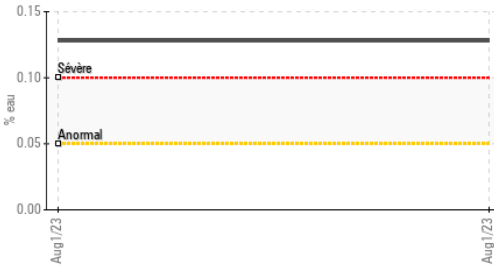
CONTAMINANTS		methode	limite/base	actuel	passé1	passé2
Silicium	ppm	ASTM D5185(m)	>20	<b>&lt;1</b>	---	---
Sodium	ppm	ASTM D5185(m)		<b>1</b>	---	---
Potassium	ppm	ASTM D5185(m)	>20	<b>&lt;1</b>	---	---
Eau	%	ASTM D6304*	>0.05	<b>▲ 0.128</b>	---	---
ppm d'eau	ppm	ASTM D6304*	>500	<b>▲ 1289.9</b>	---	---

INFRA-RED		methode	limite/base	actuel	passé1	passé2
% de suie	%	ASTM D7844*		<b>0</b>	---	---
Nitration	Abs/cm	ASTM D7624*		<b>4.3</b>	---	---
Sulfatation	Abs./1mm	ASTM D7415*		<b>158.6</b>	---	---
Contenu en huile minérale	%	ASTM D7418*	<5.0%	<b>&lt;5.0</b>	---	---

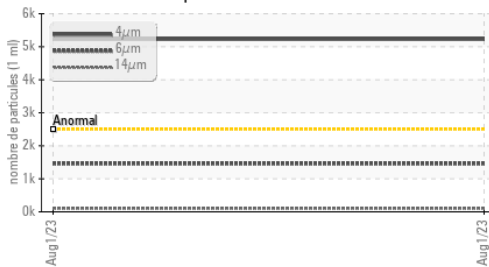
## Comptage de particules



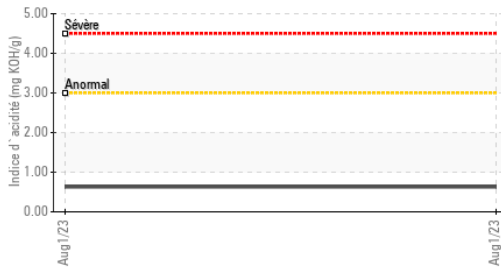
## Eau



## Tendance des particules



## Indice d'acidité



## Viscosité 100°C



PROPRETÉ DU FLUIDE	methode	limite/base	actuel	passé1	passé2
Particules >4µ	ASTM D7647	>2500	▲ 5229	---	---
Particules >6µ	ASTM D7647	>640	▲ 1460	---	---
Particules >14µ	ASTM D7647	>80	▲ 103	---	---
Particules >21µ	ASTM D7647	>20	24	---	---
Particules >38µ	ASTM D7647	>4	1	---	---
Particules >71µ	ASTM D7647	>3	0	---	---
Propreté de l'huile	ISO 4406 (c)	>18/16/13	▲ 20/18/14	---	---

FLUID DEGRADATION	methode	limite/base	actuel	passé1	passé2
Oxydation	Abs/.1mm	ASTM D7414*	165.1	---	---
Indice d'acidité	mg KOH/g	ASTM D974*	0.63	---	---

VISUEL	methode	limite/base	actuel	passé1	passé2
Métal blanc	scalar	Visual*	NONE	---	---
Bronze	scalar	Visual*	NONE	---	---
Précipié	scalar	Visual*	NONE	---	---
Limon	scalar	Visual*	NONE	---	---
Débris	scalar	Visual*	NONE	---	---
Saleté	scalar	Visual*	NONE	---	---
Apparence	scalar	Visual*	NORML	▲ WGOIL	---
Odeur	scalar	Visual*	NORML	---	---
Eau émulsifiée	scalar	Visual*	>0.05	▲ .2%	---
Eau libre	scalar	Visual*	---	NEG	---

PROPRIÉTÉS DU FLUID	methode	limite/base	actuel	passé1	passé2
Visc 40°C	cSt	ASTM D7279(m)	70.6	69.1	---
Visc 100°C	cSt	ASTM D7279(m)	11.3	11.6	---
Indice de viscosité (VI)	Scale	ASTM D2270*	153	163	---

IMAGES DE L'ÉCHANTILLON	methode	limite/base	actuel	passé1	passé2
Coluer				no image	no image
Fond				no image	no image



**Laboratoire** : WearCheck - C8-1175 Appleby Line, Burlington, ON L7L 5H9  
**N° d'échantillon** : WC **Reçu** : 04 Aug 2023  
**N° de laboratoire** : 02574357 **Diagnostiqué** : 23 Aug 2023  
**Numéro unique** : 5619408 **Diagnostiqueur** : Bill Quesnel  
**Analyse** : MOB 2 ( Additional Tests: TAN MAN )

Pour discuter cette rapport, contacter le service à la clientèle au 1-800-268-2131.

Test denoted (\*) outside scope of accreditation, (m) method modified, (e) tested at external lab.

La validez de los resultados y la interpretación se basan en la muestra y la información proporcionada.

**Envirolin Canada**

520 rue Adanac  
Quebec, QC  
CA G1C 7B7

Contact: Patrick Levesque  
patrick.levesque@envirolin.com

T:  
F: (418)660-8889



# RAPPORT DE CONTENU EN HUILE MINERALE

PASS

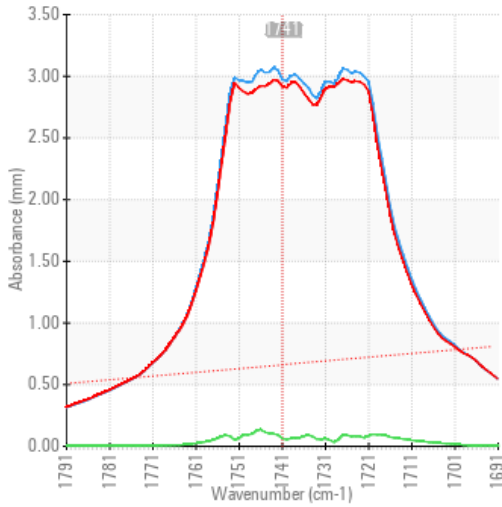


Secteur  
**M. SULLIVAN AND SON [02574356]**  
 Identité de la machine  
**JOHN DEERE 310SL 2711 (S/N 1T0310SLELF388018)**  
 Composant  
**Système hydraulique**  
 Fluide  
**PANOLIN HLP SYNTH 68 (126 LTR)**

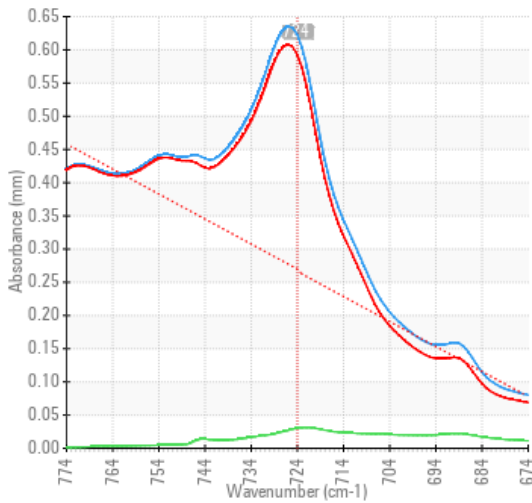
## ANALYSE SPECTRAL

		methode	limite/base	actuel	passé1	passé2
Zinc	ppm	ASTM D5185(m)	0	<b>4</b>	---	---
Contenu en huile minérale	%	ASTM D7418*	<5.0%	<b>&lt;5.0</b>	---	---

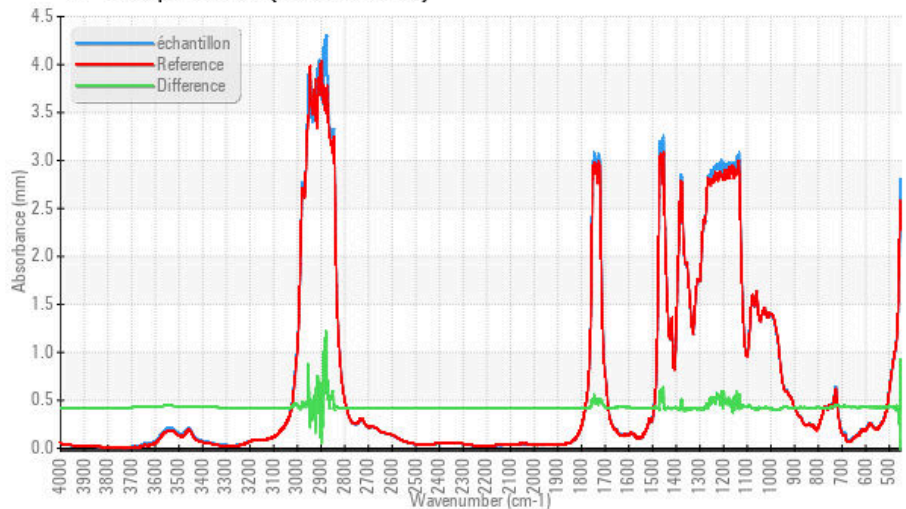
### FT-IR - Esters 1



### FT-IR - Esters II



### FT-IR Spectrum (Absorbance)



ISO 17025:2017  
 Accredited  
 Laboratory

**Laboratoire** : WearCheck - C8-1175 Appleby Line, Burlington, ON L7L 5H9  
**N° d'échantillon** : WC  
**N° de laboratoire** : 02574357  
**Reçu** : 04 Aug 2023  
**Diagnostic** : 23 Aug 2023  
**Numéro unique** : 5619408  
**Diagnostic** : Bill Quesnel  
**Analyse** : MOB 2 ( Additional Tests: TAN MAN )

Pour discuter cette rapport, contacter le service à la clientèle au 1-800-268-2131.

Test denoted (\*) outside scope of accreditation, (m) method modified, (e) tested at external lab.

La validez de los resultados y la interpretación se basan en la muestra y la información proporcionada.

## Envirolin Canada

520 rue Adanac  
 Quebec, QC  
 CA G1C 7B7

Contact: Patrick Levesque  
 patrick.levesque@envirolin.com

T:  
 F: (418)660-8889

*Cette page est intentionnellement laissée blanche*