

Secteur

**JOYGLOBAL [6100263355]**

Identité de la machine

**5272000450**

Composant

**Carburant diesel**

Fluid

**No.2 DIESEL FUEL (ULTRALOW SULPHUR) (--- GAL)**



**DIAGNOSTIC**

| INFORMATION SUR L'éCHANTILLON |             | methode     | limite/base | actuel             | passé1 | passé2 |
|-------------------------------|-------------|-------------|-------------|--------------------|--------|--------|
| Número d'échant.              | Client Info |             |             | <b>WA0021134</b>   | ---    | ---    |
| Date d'échant.                | Client Info |             |             | <b>07 Jun 2024</b> | ---    | ---    |
| Âge d la Machine              | hrs         | Client Info |             | <b>0</b>           | ---    | ---    |
| Statut de l'échant.           |             |             |             | <b>ABNORMAL</b>    | ---    | ---    |

| PHYSICAL PROPERTIES           |      | methode        | limite/base | actuel       | passé1 | passé2 |
|-------------------------------|------|----------------|-------------|--------------|--------|--------|
| Densité                       |      | ASTM D1298*    | 0.839       | <b>0.832</b> | ---    | ---    |
| Couleur du carburant          | text | Visual Screen* | Yllow       | <b>Pink</b>  | ---    | ---    |
| Visc 40°C                     | cSt  | ASTM D7279(m)  | 3.0         | <b>2.1</b>   | ---    | ---    |
| Point d'éclair Pensky-Martens | °C   | ASTM D7215*    | 52          | <b>▲ 45</b>  | ---    | ---    |

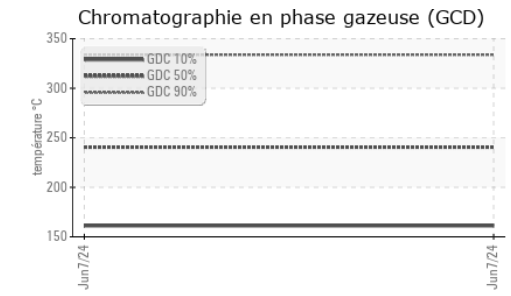
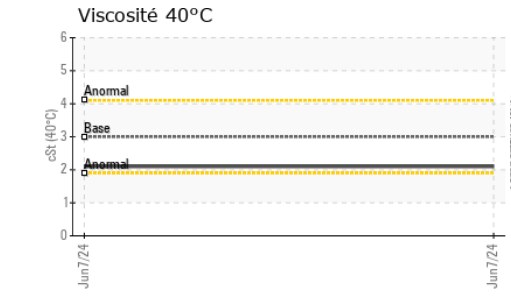
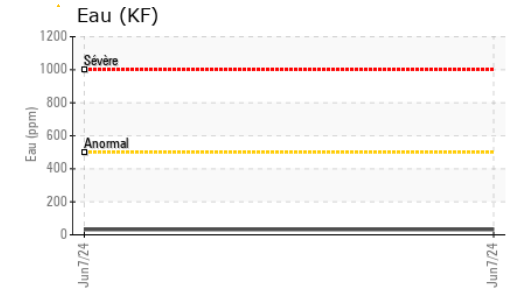
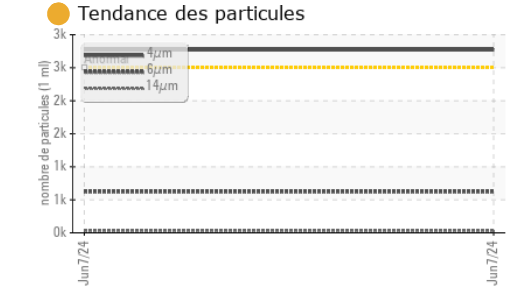
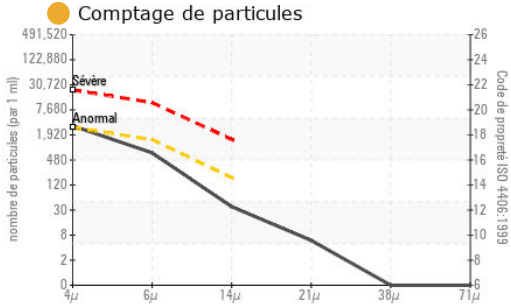
| SULFUR CONTENT |     | methode       | limite/base | actuel    | passé1 | passé2 |
|----------------|-----|---------------|-------------|-----------|--------|--------|
| Soufre         | ppm | ASTM D5185(m) | 10          | <b>12</b> | ---    | ---    |

| DISTILLATION                 |    | methode     | limite/base | actuel       | passé1 | passé2 |
|------------------------------|----|-------------|-------------|--------------|--------|--------|
| Point d'ébullition initial   | °C | ASTM D2887* | 165         | <b>▲ 154</b> | ---    | ---    |
| Point de distillation de 5%  | °C | ASTM D2887* |             | <b>174</b>   | ---    | ---    |
| Point de distillation de 10% | °C | ASTM D2887* | 201         | <b>182</b>   | ---    | ---    |
| Point de distillation de 15% | °C | ASTM D2887* |             | <b>190</b>   | ---    | ---    |
| Point de distillation de 20% | °C | ASTM D2887* | 216         | <b>198</b>   | ---    | ---    |
| Point de distillation de 30% | °C | ASTM D2887* | 230         | <b>211</b>   | ---    | ---    |
| Point de distillation de 40% | °C | ASTM D2887* | 243         | <b>225</b>   | ---    | ---    |
| Point de distillation de 50% | °C | ASTM D2887* | 255         | <b>239</b>   | ---    | ---    |
| Point de distillation de 60% | °C | ASTM D2887* | 267         | <b>255</b>   | ---    | ---    |
| Point de distillation de 70% | °C | ASTM D2887* | 280         | <b>270</b>   | ---    | ---    |
| Point de distillation de 80% | °C | ASTM D2887* | 295         | <b>289</b>   | ---    | ---    |
| Point de distillation de 85% | °C | ASTM D2887* |             | <b>302</b>   | ---    | ---    |
| Point de distillation de 90% | °C | ASTM D2887* | 310         | <b>316</b>   | ---    | ---    |
| Point de distillation de 95% | °C | ASTM D2887* |             | <b>338</b>   | ---    | ---    |
| Point d'ébullition final     | °C | ASTM D2887* | 341         | <b>372</b>   | ---    | ---    |

| IGNITION QUALITY |  | methode     | limite/base | actuel    | passé1 | passé2 |
|------------------|--|-------------|-------------|-----------|--------|--------|
| Densité API      |  | ASTM D1298* | 37.7        | <b>38</b> | ---    | ---    |
| Indice de cétane |  | ASTM D4737* | <40.0       | <b>46</b> | ---    | ---    |

| CONTAMINANTS |     | methode       | limite/base | actuel       | passé1 | passé2 |
|--------------|-----|---------------|-------------|--------------|--------|--------|
| Silicium     | ppm | ASTM D5185(m) | <1.0        | <b>0</b>     | ---    | ---    |
| Sodium       | ppm | ASTM D5185(m) | <0.1        | <b>&lt;1</b> | ---    | ---    |
| Potassium    | ppm | ASTM D5185(m) | <0.1        | <b>0</b>     | ---    | ---    |
| Eau          | %   | ASTM D6304*   | <0.05       | <b>0.003</b> | ---    | ---    |
| ppm d'eau    | ppm | ASTM D6304*   | <500        | <b>32</b>    | ---    | ---    |

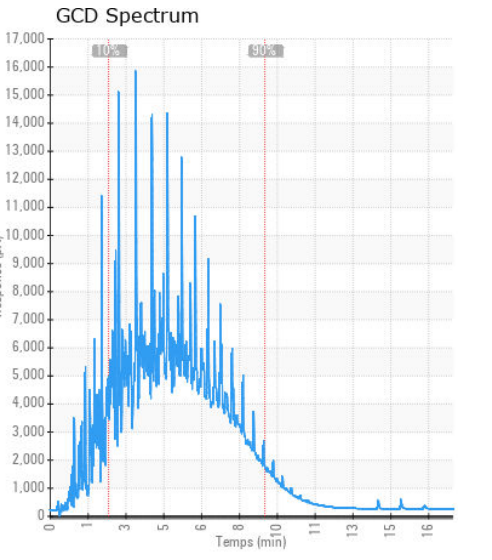
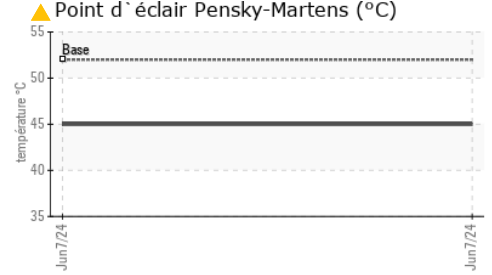
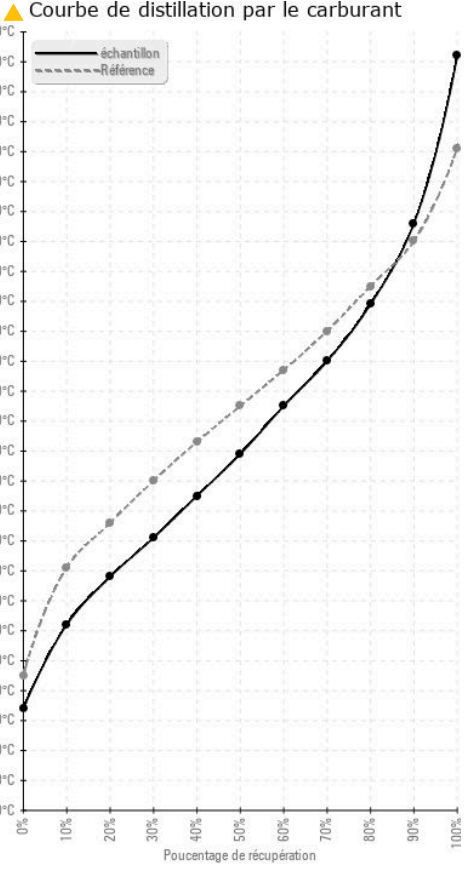
| PROPRETé DU FLUIDE  |  | methode      | limite/base | actuel            | passé1 | passé2 |
|---------------------|--|--------------|-------------|-------------------|--------|--------|
| Particules >4µ      |  | ASTM D7647   | >2500       | <b>● 2771</b>     | ---    | ---    |
| Particules >6µ      |  | ASTM D7647   | >1300       | <b>624</b>        | ---    | ---    |
| Particules >14µ     |  | ASTM D7647   | >160        | <b>32</b>         | ---    | ---    |
| Particules >21µ     |  | ASTM D7647   | >40         | <b>5</b>          | ---    | ---    |
| Particules >38µ     |  | ASTM D7647   | >10         | <b>0</b>          | ---    | ---    |
| Particules >71µ     |  | ASTM D7647   | >3          | <b>0</b>          | ---    | ---    |
| Propreté de l'huile |  | ISO 4406 (c) | >18/17/14   | <b>● 19/16/12</b> | ---    | ---    |



| HEAVY METALS | methode | limite/base   | actuel | passé1 | passé2 |
|--------------|---------|---------------|--------|--------|--------|
| Aluminium    | ppm     | ASTM D5185(m) | <0.1   | 0      | ---    |
| Nickel       | ppm     | ASTM D5185(m) | <0.1   | 0      | ---    |
| Plomb        | ppm     | ASTM D5185(m) | <0.1   | <1     | ---    |
| Vanadium     | ppm     | ASTM D5185(m) | <0.1   | 0      | ---    |
| Fer          | ppm     | ASTM D5185(m) | <0.1   | 0      | ---    |
| Calcium      | ppm     | ASTM D5185(m) | <0.1   | <1     | ---    |
| Magnésium    | ppm     | ASTM D5185(m) | <0.1   | 0      | ---    |
| Phosphore    | ppm     | ASTM D5185(m) | <0.1   | <1     | ---    |
| Zinc         | ppm     | ASTM D5185(m) | <0.1   | <1     | ---    |

| IMAGES DE L'ÉCHANTILLON | methode | limite/base | actuel | passé1   | passé2   |
|-------------------------|---------|-------------|--------|----------|----------|
| Coluer                  |         |             |        | no image | no image |
| Fond                    |         |             |        | no image | no image |

## GRAPHIQUES



**Laboratoire** : WearCheck - C8-1175 Appleby Line, Burlington, ON L7L 5H9  
**N° d'échantillon** : WA0021134  
**N° de laboratoire** : 02641869  
**Reçu** : 13 Jun 2024  
**Tested** : 19 Jun 2024  
**Numéro unique** : 5799408  
**Analyste** : FUEL ( Additional Tests: CC Flash, PrtCount )  
**Diagnostiqué** : 19 Jun 2024 - Kevin Marson

**Wajax Limited**  
 2997 AV. WATT  
 Quebec, QC  
 CA G1X 3W1  
 Contact: Steve Racine  
 sracine@wajax.com  
 T:  
 F: (418)651-4448

Pour discuter cette rapport, contacter le service à la clientèle au 1-800-268-2131.  
 Test denoted (\*) outside scope of accreditation, (m) method modified, (e) tested at external lab.  
 La validez de los resultados y la interpretación se basan en la muestra y la información proporcionada.