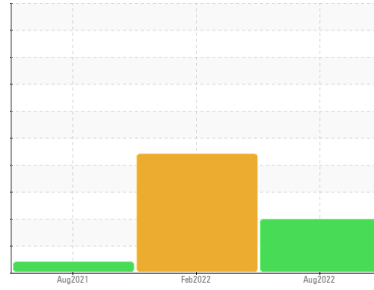


PROBLEM SUMMARY

Sample Rating Trend



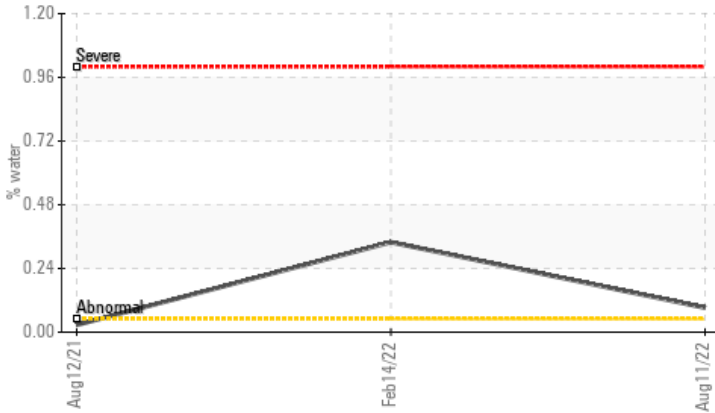
WATER



Machine Id
KAESER AS 25T 7488368 (S/N 1545)
Component
Compressor
Fluid
KAESER SIGMA (OEM) S-460 (--- GAL)

COMPONENT CONDITION SUMMARY

▲ Water



RECOMMENDATION

Oil and filter change at the time of sampling has been noted. No corrective action is recommended at this time. We were unable to perform a particle count due to a high concentration of particles present in this sample. We recommend an early resample in 500 hours to monitor this condition.

PROBLEMATIC TEST RESULTS

Sample Status				ABNORMAL	ABNORMAL	ABNORMAL
Water	%	ASTM D6304	>0.05	▲ 0.092	▲ 0.339	0.027
ppm Water	ppm	ASTM D6304	>500	▲ 924.5	▲ 3390	273.3
Debris	scalar	*Visual	NONE	▲ MODER	▲ MODER	NONE

Customer Id: ORLORLFLKC
Sample No.: KC94618
Lab Number: 05626360
Test Package: IND 2



To manage this report scan the QR code

To discuss the diagnosis or test data:
Don Baldrige +1
don.b505@comcast.net

To change component or sample information:
Customer Service +1 1-800-237-1369
customerservice@wearcheck.com

RECOMMENDED ACTIONS

Action	Status	Date	Done By	Description
Change Fluid	---	---	?	Oil and filter change at the time of sampling has been noted.
Change Filter	---	---	?	Oil and filter change at the time of sampling has been noted.
Alert	---	---	?	We were unable to perform a particle count due to a high concentration of particles present in this sample.

HISTORICAL DIAGNOSIS

14 Feb 2022 Diag: Don Baldrige

WATER



We advise that you stop the unit and follow the water drain-off procedure for this component. We recommend an early resample in 500 hours to monitor this condition. We were unable to perform a particle count due to a high concentration of particles present in this sample. All component wear rates are normal. Moderate concentration of visible dirt/debris present in the oil. There is a light concentration of water present in the oil. Free water present. The AN level is acceptable for this fluid.

[view report](#)



12 Aug 2021 Diag: Don Baldrige

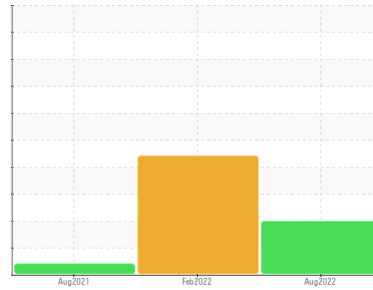
ISO



No corrective action is recommended at this time. Oil and filter change at the time of sampling has been noted. Resample at the next service interval to monitor. All component wear rates are normal. There is a high amount of silt (particulates < 14 microns in size) present in the oil. The AN level is acceptable for this fluid. The condition of the oil is suitable for further service.

[view report](#)





Machine Id
KAESER AS 25T 7488368 (S/N 1545)

Component
Compressor
Fluid
KAESER SIGMA (OEM) S-460 (--- GAL)

DIAGNOSIS

▲ Recommendation

Oil and filter change at the time of sampling has been noted. No corrective action is recommended at this time. We were unable to perform a particle count due to a high concentration of particles present in this sample. We recommend an early resample in 500 hours to monitor this condition.

Wear

All component wear rates are normal.

▲ Contamination

There is a trace of moisture present in the oil. Moderate concentration of visible dirt/debris present in the oil.

Fluid Condition

The AN level is acceptable for this fluid. The condition of the oil is suitable for further service.

SAMPLE INFORMATION

	method	limit/base	current	history 1	history 2
Sample Number			KC94618	KC86811	KC86810
Sample Date			11 Aug 2022	14 Feb 2022	12 Aug 2021
Machine Age	hrs		857	599	342
Oil Age	hrs		0	257	342
Oil Changed			Changed	Not Changd	Changed
Sample Status			ABNORMAL	ABNORMAL	ABNORMAL

WEAR METALS

	method	limit/base	current	history 1	history 2
Iron	ppm	ASTM D5185m >50	0	<1	0
Chromium	ppm	ASTM D5185m >10	0	0	0
Nickel	ppm	ASTM D5185m >3	0	0	0
Titanium	ppm	ASTM D5185m >3	0	0	0
Silver	ppm	ASTM D5185m >2	0	<1	<1
Aluminum	ppm	ASTM D5185m >10	<1	<1	<1
Lead	ppm	ASTM D5185m >10	0	<1	0
Copper	ppm	ASTM D5185m >50	4	4	3
Tin	ppm	ASTM D5185m >10	<1	0	0
Antimony	ppm	ASTM D5185m	---	0	0
Vanadium	ppm	ASTM D5185m	0	0	0
Cadmium	ppm	ASTM D5185m	0	0	0

ADDITIVES

	method	limit/base	current	history 1	history 2
Boron	ppm	ASTM D5185m	0	3	14
Barium	ppm	ASTM D5185m 90	0	0	0
Molybdenum	ppm	ASTM D5185m	0	0	0
Manganese	ppm	ASTM D5185m	0	0	<1
Magnesium	ppm	ASTM D5185m 90	45	47	44
Calcium	ppm	ASTM D5185m 2	0	0	0
Phosphorus	ppm	ASTM D5185m	2	3	<1
Zinc	ppm	ASTM D5185m	0	0	0

CONTAMINANTS

	method	limit/base	current	history 1	history 2
Silicon	ppm	ASTM D5185m >25	<1	2	0
Sodium	ppm	ASTM D5185m	18	10	14
Potassium	ppm	ASTM D5185m >20	8	4	22
Water	%	ASTM D6304 >0.05	▲ 0.092	▲ 0.339	0.027
ppm Water	ppm	ASTM D6304 >500	▲ 924.5	▲ 3390	273.3

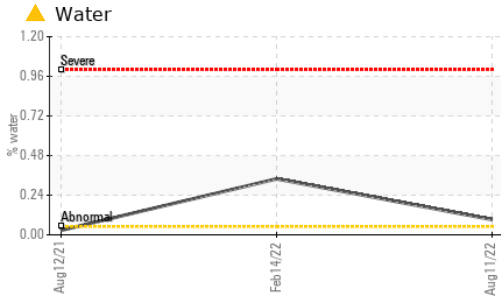
FLUID CLEANLINESS

	method	limit/base	current	history 1	history 2
Particles >4µm	ASTM D7647		---	---	9795
Particles >6µm	ASTM D7647	>1300	---	---	▲ 3823
Particles >14µm	ASTM D7647	>80	---	---	76
Particles >21µm	ASTM D7647	>20	---	---	12
Particles >38µm	ASTM D7647	>4	---	---	1
Particles >71µm	ASTM D7647	>3	---	---	0
Oil Cleanliness	ISO 4406 (c)	>--/17/13	---	---	▲ 19/13

FLUID DEGRADATION

	method	limit/base	current	history 1	history 2
Acid Number (AN)	mg KOH/g	ASTM D8045 0.4	0.31	0.29	0.285

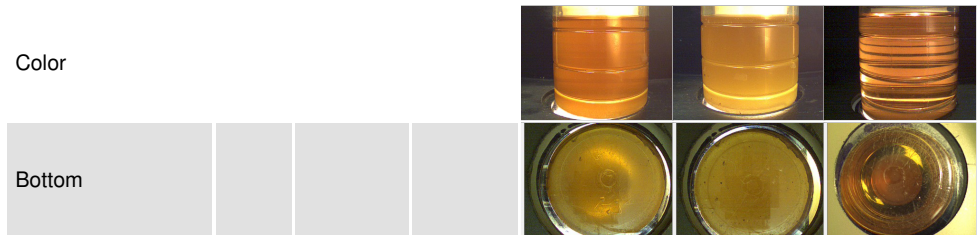
OIL ANALYSIS REPORT



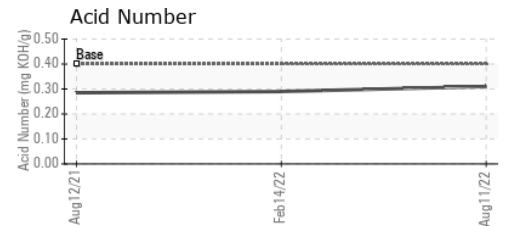
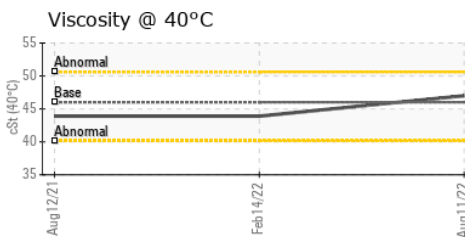
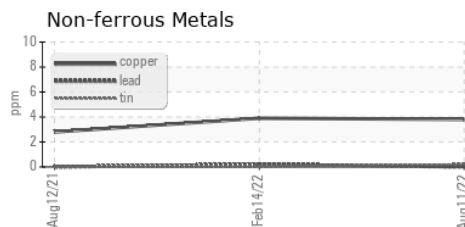
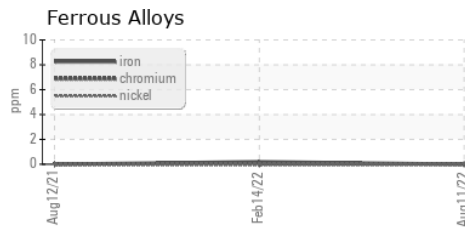
VISUAL	method	limit/base	current	history 1	history 2
White Metal	scalar	*Visual	NONE	NONE	NONE
Yellow Metal	scalar	*Visual	NONE	NONE	NONE
Precipitate	scalar	*Visual	NONE	NONE	NONE
Silt	scalar	*Visual	NONE	NONE	NONE
Debris	scalar	*Visual	NONE	▲ MODER	▲ MODER
Sand/Dirt	scalar	*Visual	NONE	NONE	NONE
Appearance	scalar	*Visual	NORML	▲ HAZY	NORML
Odor	scalar	*Visual	NORML	NORML	NORML
Emulsified Water	scalar	*Visual	>0.05	NEG	NEG
Free Water	scalar	*Visual		▲ 1.0	NEG

FLUID PROPERTIES	method	limit/base	current	history 1	history 2
Visc @ 40°C	cSt	ASTM D445 46	47.0	43.9	43.9

SAMPLE IMAGES	method	limit/base	current	history 1	history 2
---------------	--------	------------	---------	-----------	-----------



GRAPHS



Certificate L2367

Laboratory : WearCheck USA - 501 Madison Ave., Cary, NC 27513
Sample No. : KC94618 **Received** : 24 Aug 2022
Lab Number : 05626360 **Diagnosed** : 26 Aug 2022
Unique Number : 10110881 **Diagnostician** : Don Baldrige
Test Package : IND 2

ORLANDO KITCHEN AND BATH
 440 W GRANT ST
 ORLANDO, FL
 USA 32806
 Contact: Service Manager

To discuss this sample report, contact Customer Service at 1-800-237-1369.

* - Denotes test methods that are outside of the ISO 17025 scope of accreditation.

Statements of conformity to specifications are based on the simple acceptance decision rule (JCGM 106:2012)

T:
F: