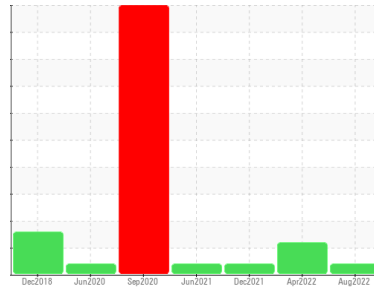




PROBLEM SUMMARY

Sample Rating Trend



VIS DEBRIS



Machine Id
KAESER ASD 40 5019876 (S/N 1061)
 Component
Compressor
 Fluid
KAESER SIGMA (OEM) S-460 (--- GAL)

COMPONENT CONDITION SUMMARY

No relevant graphs to display

RECOMMENDATION

No corrective action is recommended at this time. The filter change at the time of sampling has been noted. Resample at the next service interval to monitor. We were unable to perform a particle count due to a high concentration of particles present in this sample.

PROBLEMATIC TEST RESULTS

Sample Status		ABNORMAL	ABNORMAL	ABNORMAL
Debris	scalar *Visual	NONE	▲ MODER	NONE

Customer Id: VALFAY
 Sample No.: KCP30947
 Lab Number: 05635076
 Test Package: IND 2



To manage this report scan the QR code

To discuss the diagnosis or test data:
 Don Baldrige +1
don.b505@comcast.net

To change component or sample information:
 Customer Service +1 1-800-237-1369
customerservice@wearcheck.com

RECOMMENDED ACTIONS

Action	Status	Date	Done By	Description
Alert	---	---	?	We were unable to perform a particle count due to a high concentration of particles present in this sample.

HISTORICAL DIAGNOSIS

19 Apr 2022 Diag: Angela Borella

ISO



Oil and filter change at the time of sampling has been noted. Resample at the next service interval to monitor. All component wear rates are normal. There is a high amount of particulates present in the oil. The AN level is acceptable for this fluid. The condition of the oil is suitable for further service.

view report



20 Dec 2021 Diag: Jonathan Hester

VIS DEBRIS



Oil and filter change at the time of sampling has been noted. Resample at the next service interval to monitor. We were unable to perform a particle count due to a high concentration of particles present in this sample. All component wear rates are normal. Moderate concentration of visible dirt/debris present in the oil. The AN level is acceptable for this fluid. The condition of the oil is suitable for further service.

view report



07 Jun 2021 Diag: Don Baldrige

VIS DEBRIS



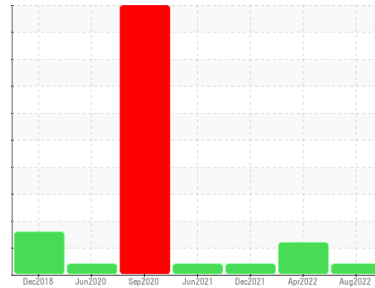
No corrective action is recommended at this time. The filter change at the time of sampling has been noted. Resample at the next service interval to monitor. We were unable to perform a particle count due to a high concentration of particles present in this sample. A decrease in the iron level is noted. Moderate concentration of visible dirt/debris present in the oil. The water content is negligible. The AN level is acceptable for this fluid. The condition of the oil is acceptable for the time in service.

view report



Machine Id
KAESER ASD 40 5019876 (S/N 1061)

Component
Compressor
Fluid
KAESER SIGMA (OEM) S-460 (--- GAL)



DIAGNOSIS

▲ Recommendation

No corrective action is recommended at this time. The filter change at the time of sampling has been noted. Resample at the next service interval to monitor. We were unable to perform a particle count due to a high concentration of particles present in this sample.

Wear

All component wear rates are normal.

▲ Contamination

Moderate concentration of visible dirt/debris present in the oil.

Fluid Condition

The AN level is acceptable for this fluid. The condition of the oil is suitable for further service.

SAMPLE INFORMATION

	method	limit/base	current	history 1	history 2
Sample Number			KCP30947	KCP45605	KCP31486
Sample Date			25 Aug 2022	19 Apr 2022	20 Dec 2021
Machine Age	hrs		38619	37051	36909
Oil Age	hrs		2000	142	1000
Oil Changed			Not Changed	Changed	Changed
Sample Status			ABNORMAL	ABNORMAL	ABNORMAL

WEAR METALS

	method	limit/base	current	history 1	history 2
Iron	ppm	ASTM D5185m >50	<1	<1	2
Chromium	ppm	ASTM D5185m >10	0	0	0
Nickel	ppm	ASTM D5185m >3	0	0	0
Titanium	ppm	ASTM D5185m >3	0	0	0
Silver	ppm	ASTM D5185m >2	0	<1	0
Aluminum	ppm	ASTM D5185m >10	<1	<1	<1
Lead	ppm	ASTM D5185m >10	0	0	0
Copper	ppm	ASTM D5185m >50	10	2	5
Tin	ppm	ASTM D5185m >10	0	<1	0
Antimony	ppm	ASTM D5185m	---	---	0
Vanadium	ppm	ASTM D5185m	0	0	0
Cadmium	ppm	ASTM D5185m	0	0	0

ADDITIVES

	method	limit/base	current	history 1	history 2
Boron	ppm	ASTM D5185m	0	0	<1
Barium	ppm	ASTM D5185m 90	1	26	17
Molybdenum	ppm	ASTM D5185m	0	0	0
Manganese	ppm	ASTM D5185m	<1	<1	0
Magnesium	ppm	ASTM D5185m 90	29	67	26
Calcium	ppm	ASTM D5185m 2	0	0	0
Phosphorus	ppm	ASTM D5185m	<1	8	7
Zinc	ppm	ASTM D5185m	22	9	28
Sulfur	ppm	ASTM D5185m	15991	18714	15202

CONTAMINANTS

	method	limit/base	current	history 1	history 2
Silicon	ppm	ASTM D5185m >25	0	0	<1
Sodium	ppm	ASTM D5185m	17	11	2
Potassium	ppm	ASTM D5185m >20	1	5	0
Water	%	ASTM D6304 >0.05	0.022	0.023	0.010
ppm Water	ppm	ASTM D6304 >500	226.7	232.9	103.7

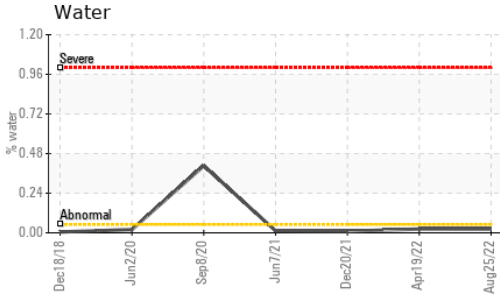
FLUID CLEANLINESS

	method	limit/base	current	history 1	history 2
Particles >4µm	ASTM D7647		---	65549	---
Particles >6µm	ASTM D7647 >1300		---	▲ 14335	---
Particles >14µm	ASTM D7647 >80		---	▲ 473	---
Particles >21µm	ASTM D7647 >20		---	▲ 81	---
Particles >38µm	ASTM D7647 >4		---	2	---
Particles >71µm	ASTM D7647 >3		---	0	---
Oil Cleanliness	ISO 4406 (c) >17/13		---	▲ 21/16	---

FLUID DEGRADATION

	method	limit/base	current	history 1	history 2
Acid Number (AN)	mg KOH/g	ASTM D8045 0.4	0.32	0.38	0.335

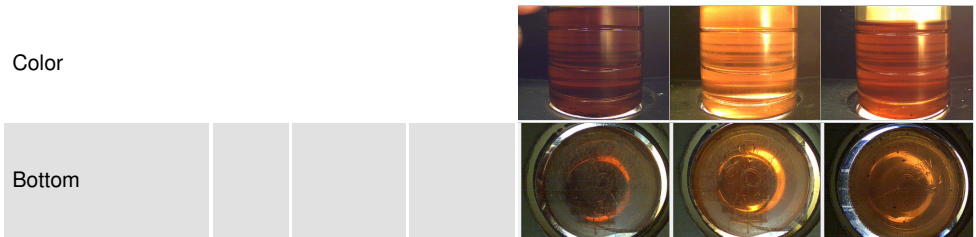
OIL ANALYSIS REPORT



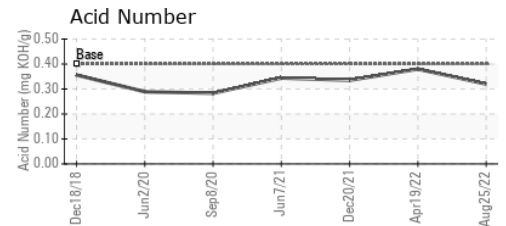
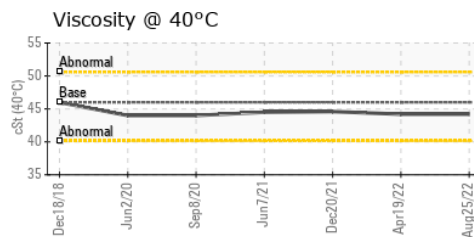
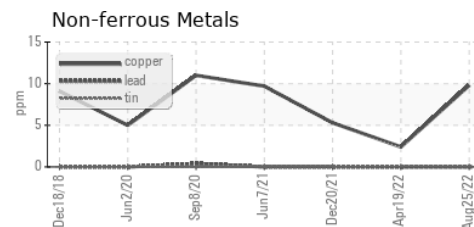
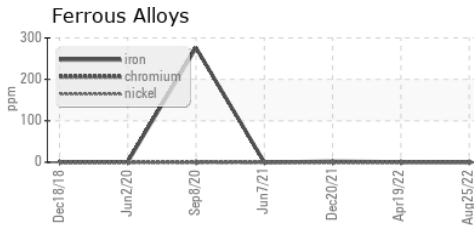
VISUAL	method	limit/base	current	history 1	history 2
White Metal	scalar	*Visual	NONE	NONE	NONE
Yellow Metal	scalar	*Visual	NONE	NONE	NONE
Precipitate	scalar	*Visual	NONE	NONE	NONE
Silt	scalar	*Visual	NONE	NONE	NONE
Debris	scalar	*Visual	NONE	▲ MODER	▲ MODER
Sand/Dirt	scalar	*Visual	NONE	NONE	NONE
Appearance	scalar	*Visual	NORML	NORML	NORML
Odor	scalar	*Visual	NORML	NORML	NORML
Emulsified Water	scalar	*Visual	>0.05	NEG	NEG
Free Water	scalar	*Visual		NEG	NEG

FLUID PROPERTIES	method	limit/base	current	history 1	history 2
Visc @ 40°C	cSt	ASTM D445 46	44.2	44.2	44.6

SAMPLE IMAGES	method	limit/base	current	history 1	history 2
---------------	--------	------------	---------	-----------	-----------



GRAPHS



Certificate L2367

Laboratory : WearCheck USA - 501 Madison Ave., Cary, NC 27513
Sample No. : KCP30947 **Received** : 06 Sep 2022
Lab Number : 05635076 **Diagnosed** : 08 Sep 2022
Unique Number : 10124606 **Diagnostician** : Don Baldrige
Test Package : IND 2 (Additional Tests: KF, PrtCount)

VALLEY PROTEINS
 1309 INDUSTRIAL DR
 FAYETTEVILLE, NC
 USA 28301
 Contact:

To discuss this sample report, contact Customer Service at 1-800-237-1369.

* - Denotes test methods that are outside of the ISO 17025 scope of accreditation.

Statements of conformity to specifications are based on the simple acceptance decision rule (JCGM 106:2012)

T:
F: