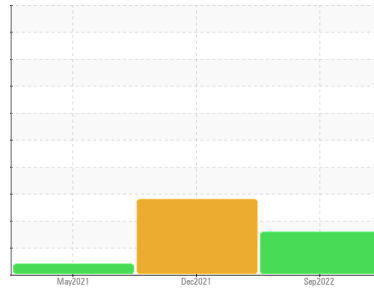


PROBLEM SUMMARY

Sample Rating Trend



ISO

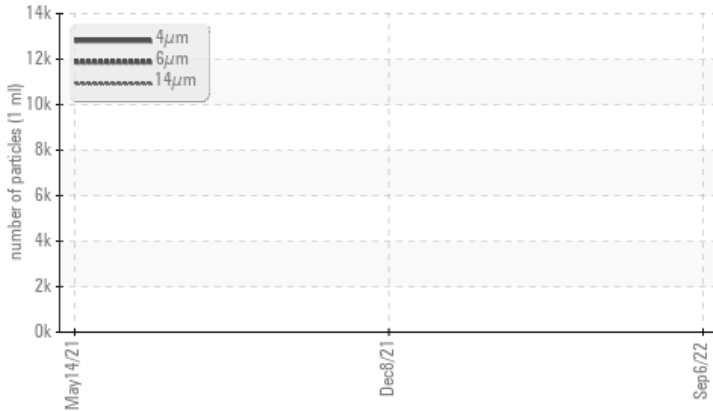


Machine Id
5106986 (S/N 2619)

Component
Compressor
Fluid
KAESER SIGMA (OEM) M-460 (--- QTS)

COMPONENT CONDITION SUMMARY

▲ Particle Trend



RECOMMENDATION

Oil and filter change at the time of sampling has been noted. No corrective action is recommended at this time. Resample at the next service interval to monitor.

PROBLEMATIC TEST RESULTS

Sample Status			ABNORMAL	ABNORMAL	ABNORMAL
Particles >6µm	ASTM D7647	>1300	▲ 3261	---	---
Particles >14µm	ASTM D7647	>80	▲ 171	---	---
Particles >21µm	ASTM D7647	>20	▲ 22	---	---
Oil Cleanliness	ISO 4406 (c)	>--/17/13	▲ 21/19/15	---	---

Customer Id: AMDHUN
Sample No.: KCP50705
Lab Number: 05635639
Test Package: IND 2



To manage this report scan the QR code

To discuss the diagnosis or test data:
Don Baldrige +1
don.b505@comcast.net

To change component or sample information:
Customer Service +1 1-800-237-1369
customerservice@wearcheck.com

RECOMMENDED ACTIONS

Action	Status	Date	Done By	Description
Change Fluid	---	---	?	Oil and filter change at the time of sampling has been noted.
Change Filter	---	---	?	Oil and filter change at the time of sampling has been noted.

HISTORICAL DIAGNOSIS

08 Dec 2021 Diag: Jonathan Hester

WATER



Oil and filter change at the time of sampling has been noted. We recommend an early resample in 500 hours to monitor this condition. We were unable to perform a particle count due to a high concentration of particles present in this sample. All component wear rates are normal. Appearance is hazy. There is a light concentration of water present in the oil. Moderate concentration of visible dirt/debris present in the oil. The AN level is acceptable for this fluid. The condition of the oil is suitable for further service.

[view report](#)



14 May 2021 Diag: Don Baldrige

VIS DEBRIS

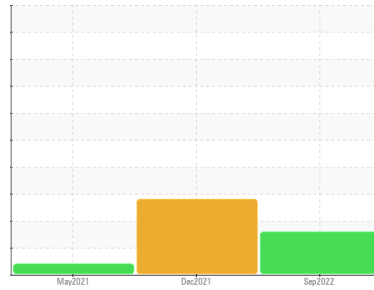


No corrective action is recommended at this time. Oil and filter change at the time of sampling has been noted. Resample at the next service interval to monitor. We were unable to perform a particle count due to a high concentration of particles present in this sample. All component wear rates are normal. Moderate concentration of visible dirt/debris present in the oil. The AN level is acceptable for this fluid. The condition of the oil is suitable for further service.

[view report](#)



Machine Id
5106986 (S/N 2619)
Component
Compressor
Fluid
KAESER SIGMA (OEM) M-460 (--- QTS)



DIAGNOSIS

Recommendation

Oil and filter change at the time of sampling has been noted. No corrective action is recommended at this time. Resample at the next service interval to monitor.

Wear

All component wear rates are normal.

Contamination

There is a high amount of particulates present in the oil.

Fluid Condition

The AN level is acceptable for this fluid. The condition of the oil is suitable for further service.

SAMPLE INFORMATION

	method	limit/base	current	history 1	history 2
Sample Number			KCP50705	KCP35237	KCP32219
Sample Date			06 Sep 2022	08 Dec 2021	14 May 2021
Machine Age	hrs		20074	16781	13552
Oil Age	hrs		0	3200	2640
Oil Changed			Changed	Changed	Changed
Sample Status			ABNORMAL	ABNORMAL	ABNORMAL

WEAR METALS

	method	limit/base	current	history 1	history 2
Iron	ppm	ASTM D5185m >50	0	11	0
Chromium	ppm	ASTM D5185m >10	0	<1	0
Nickel	ppm	ASTM D5185m >3	0	0	0
Titanium	ppm	ASTM D5185m >3	0	<1	0
Silver	ppm	ASTM D5185m >2	<1	0	<1
Aluminum	ppm	ASTM D5185m >10	<1	<1	0
Lead	ppm	ASTM D5185m >10	<1	0	<1
Copper	ppm	ASTM D5185m >50	7	6	10
Tin	ppm	ASTM D5185m >10	<1	0	0
Antimony	ppm	ASTM D5185m	---	<1	0
Vanadium	ppm	ASTM D5185m	0	0	0
Cadmium	ppm	ASTM D5185m	0	0	0

ADDITIVES

	method	limit/base	current	history 1	history 2
Boron	ppm	ASTM D5185m 0	0	<1	0
Barium	ppm	ASTM D5185m 90	0	2	0
Molybdenum	ppm	ASTM D5185m 0	0	<1	0
Manganese	ppm	ASTM D5185m	0	<1	0
Magnesium	ppm	ASTM D5185m 100	3	25	2
Calcium	ppm	ASTM D5185m 0	0	2	0
Phosphorus	ppm	ASTM D5185m 0	4	3	3
Zinc	ppm	ASTM D5185m 0	43	86	53
Sulfur	ppm	ASTM D5185m 23500	17909	17895	18929

CONTAMINANTS

	method	limit/base	current	history 1	history 2
Silicon	ppm	ASTM D5185m >25	<1	<1	0
Sodium	ppm	ASTM D5185m	0	4	0
Potassium	ppm	ASTM D5185m >20	1	3	0
Water	%	ASTM D6304 >0.05	0.008	▲ 0.099	0.009
ppm Water	ppm	ASTM D6304 >500	83.8	▲ 990	95.4

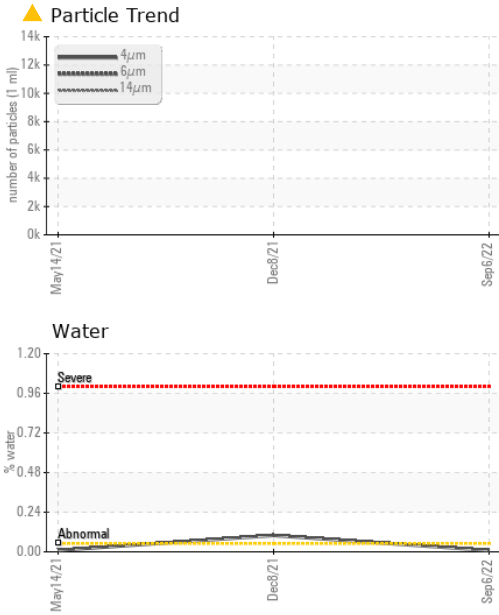
FLUID CLEANLINESS

	method	limit/base	current	history 1	history 2
Particles >4µm	ASTM D7647		13801	---	---
Particles >6µm	ASTM D7647 >1300		▲ 3261	---	---
Particles >14µm	ASTM D7647 >80		▲ 171	---	---
Particles >21µm	ASTM D7647 >20		▲ 22	---	---
Particles >38µm	ASTM D7647 >4		1	---	---
Particles >71µm	ASTM D7647 >3		0	---	---
Oil Cleanliness	ISO 4406 (c) >--/17/13		▲ 21/19/15	---	---

FLUID DEGRADATION

	method	limit/base	current	history 1	history 2
Acid Number (AN)	mg KOH/g	ASTM D8045 1.0	0.46	0.406	0.444

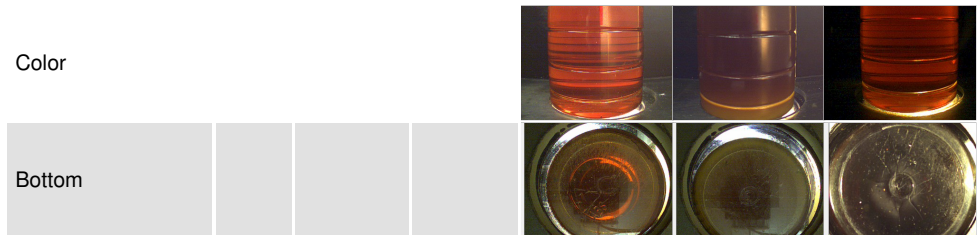
OIL ANALYSIS REPORT



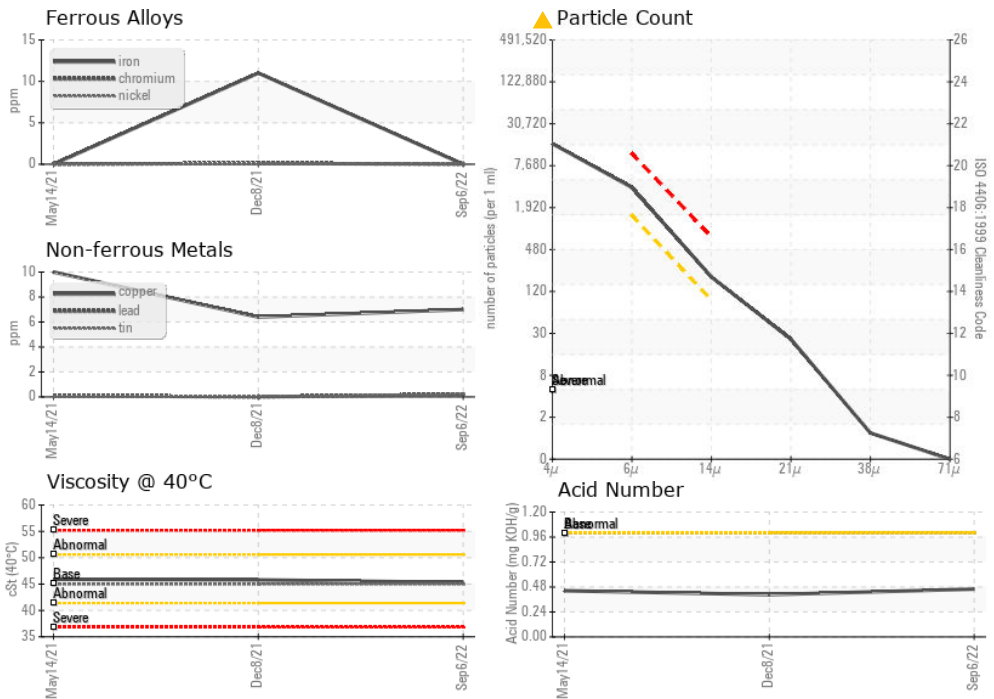
PARAMETER	method	limit/base	current	history 1	history 2
White Metal	scalar	*Visual	NONE	NONE	MODER
Yellow Metal	scalar	*Visual	NONE	NONE	NONE
Precipitate	scalar	*Visual	NONE	NONE	NONE
Silt	scalar	*Visual	NONE	NONE	NONE
Debris	scalar	*Visual	NONE	LIGHT	▲ MODER ▲ MODER
Sand/Dirt	scalar	*Visual	NONE	NONE	NONE
Appearance	scalar	*Visual	NORML	NORML	▲ HAZY NORML
Odor	scalar	*Visual	NORML	NORML	NORML
Emulsified Water	scalar	*Visual	>0.05	NEG	0.2% NEG
Free Water	scalar	*Visual		NEG	NEG

PARAMETER	method	limit/base	current	history 1	history 2
Visc @ 40°C	cSt	ASTM D445	45	45.3	45.8 45.9

PARAMETER	method	limit/base	current	history 1	history 2
-----------	--------	------------	---------	-----------	-----------



GRAPHS



Laboratory : WearCheck USA - 501 Madison Ave., Cary, NC 27513
Sample No. : KCP50705 **Received** : 07 Sep 2022
Lab Number : 05635639 **Diagnosed** : 08 Sep 2022
Unique Number : 10125169 **Diagnostician** : Don Baldrige
Test Package : IND 2 (Additional Tests: KF, PrtCount)

AMD DIRECT INC
 17322 GOTHARD ST
 HUNTINGTON BEACH, CA
 USA 92647-6203
 Contact: Service Manager

To discuss this sample report, contact Customer Service at 1-800-237-1369.
 * - Denotes test methods that are outside of the ISO 17025 scope of accreditation.
 Statements of conformity to specifications are based on the simple acceptance decision rule (JCGM 106:2012)