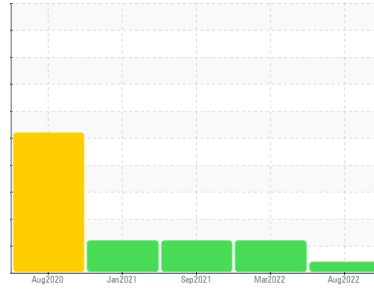


# PROBLEM SUMMARY

Sample Rating Trend



**VIS DEBRIS**



Machine Id  
**KAESER SK 15 7355024 (S/N 1552)**  
Component  
**Compressor**  
Fluid  
**KAESER SIGMA (OEM) M-460 (--- GAL)**

## COMPONENT CONDITION SUMMARY

No relevant graphs to display

## RECOMMENDATION

No corrective action is recommended at this time. The filter change at the time of sampling has been noted. Resample at the next service interval to monitor. We were unable to perform a particle count due to a high concentration of particles present in this sample.

## PROBLEMATIC TEST RESULTS

Sample Status		ABNORMAL	ATTENTION	ABNORMAL
Debris	scalar *Visual	▲ MODER	NONE	NONE

**Customer Id:** PAUBRI  
**Sample No.:** KCP48417  
**Lab Number:** 05640358  
**Test Package:** IND 2



To manage this report scan the QR code

To discuss the diagnosis or test data:  
Doug Bogart +1 (800)237-1369 x4016  
[dougb@wearcheckusa.com](mailto:dougb@wearcheckusa.com)

To change component or sample information:  
Customer Service +1 1-800-237-1369  
[customerservice@wearcheck.com](mailto:customerservice@wearcheck.com)

RECOMMENDED ACTIONS

Action	Status	Date	Done By	Description
Alert	---	---	?	We were unable to perform a particle count due to a high concentration of particles present in this sample.

HISTORICAL DIAGNOSIS

18 Mar 2022 Diag: Jonathan Hester

ISO



No corrective action is recommended at this time. Oil and filter change at the time of sampling has been noted. Resample at the next service interval to monitor. All component wear rates are normal. There is a moderate amount of particulates present in the oil. The AN level is acceptable for this fluid. The condition of the oil is suitable for further service.

view report



03 Sep 2021 Diag: Jonathan Hester

ISO



Oil and filter change at the time of sampling has been noted. Resample at the next service interval to monitor. All component wear rates are normal. There is a high amount of particulates present in the oil. The AN level is acceptable for this fluid. The condition of the oil is suitable for further service.

view report



11 Jan 2021 Diag: Jonathan Hester

ISO



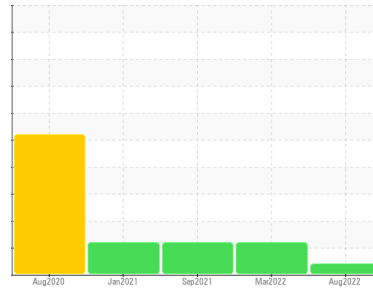
Oil and filter change at the time of sampling has been noted. Resample at the next service interval to monitor. All component wear rates are normal. There is a moderate amount of particulates present in the oil. The AN level is acceptable for this fluid. The condition of the oil is suitable for further service.

view report



Machine Id  
**KAESER SK 15 7355024 (S/N 1552)**

Component  
**Compressor**  
Fluid  
**KAESER SIGMA (OEM) M-460 (--- GAL)**



## DIAGNOSIS

### ▲ Recommendation

No corrective action is recommended at this time. The filter change at the time of sampling has been noted. Resample at the next service interval to monitor. We were unable to perform a particle count due to a high concentration of particles present in this sample.

### Wear

All component wear rates are normal.

### ▲ Contamination

Moderate concentration of visible dirt/debris present in the oil.

### Fluid Condition

The AN level is acceptable for this fluid. The condition of the oil is suitable for further service.

## SAMPLE INFORMATION

	method	limit/base	current	history 1	history 2
Sample Number			<b>KCP48417</b>	KCP45289	KCP37845
Sample Date			<b>24 Aug 2022</b>	18 Mar 2022	03 Sep 2021
Machine Age	hrs		<b>11444</b>	9166	5363
Oil Age	hrs		<b>0</b>	0	3088
Oil Changed			<b>Not Changed</b>	Changed	Changed
Sample Status			<b>ABNORMAL</b>	ATTENTION	ABNORMAL

## WEAR METALS

	method	limit/base	current	history 1	history 2
Iron	ppm ASTM D5185m	>50	<b>&lt;1</b>	<1	<1
Chromium	ppm ASTM D5185m	>10	<b>0</b>	0	0
Nickel	ppm ASTM D5185m	>3	<b>0</b>	0	0
Titanium	ppm ASTM D5185m	>3	<b>0</b>	0	0
Silver	ppm ASTM D5185m	>2	<b>&lt;1</b>	0	<1
Aluminum	ppm ASTM D5185m	>10	<b>&lt;1</b>	<1	0
Lead	ppm ASTM D5185m	>10	<b>&lt;1</b>	0	0
Copper	ppm ASTM D5185m	>50	<b>5</b>	5	6
Tin	ppm ASTM D5185m	>10	<b>&lt;1</b>	0	0
Antimony	ppm ASTM D5185m		<b>---</b>	---	0
Vanadium	ppm ASTM D5185m		<b>0</b>	0	0
Cadmium	ppm ASTM D5185m		<b>&lt;1</b>	0	0

## ADDITIVES

	method	limit/base	current	history 1	history 2
Boron	ppm ASTM D5185m	0	<b>0</b>	<1	<1
Barium	ppm ASTM D5185m	90	<b>5</b>	0	3
Molybdenum	ppm ASTM D5185m	0	<b>0</b>	0	0
Manganese	ppm ASTM D5185m		<b>&lt;1</b>	0	<1
Magnesium	ppm ASTM D5185m	100	<b>44</b>	76	58
Calcium	ppm ASTM D5185m	0	<b>&lt;1</b>	10	<1
Phosphorus	ppm ASTM D5185m	0	<b>1</b>	2	1
Zinc	ppm ASTM D5185m	0	<b>15</b>	14	4
Sulfur	ppm ASTM D5185m	23500	<b>18579</b>	16816	16709

## CONTAMINANTS

	method	limit/base	current	history 1	history 2
Silicon	ppm ASTM D5185m	>25	<b>&lt;1</b>	<1	0
Sodium	ppm ASTM D5185m		<b>14</b>	52	20
Potassium	ppm ASTM D5185m	>20	<b>4</b>	11	6
Water	% ASTM D6304	>0.05	<b>0.027</b>	0.015	0.024
ppm Water	ppm ASTM D6304	>500	<b>274.7</b>	156.9	240.8

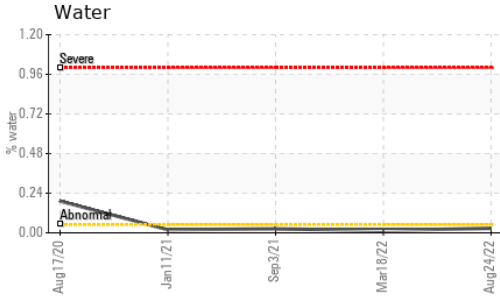
## FLUID CLEANLINESS

	method	limit/base	current	history 1	history 2
Particles >4µm	ASTM D7647		<b>---</b>	5954	25878
Particles >6µm	ASTM D7647	>1300	<b>---</b>	▲ 1575	▲ 15053
Particles >14µm	ASTM D7647	>80	<b>---</b>	▲ 132	▲ 1439
Particles >21µm	ASTM D7647	>20	<b>---</b>	▲ 31	▲ 142
Particles >38µm	ASTM D7647	>4	<b>---</b>	1	3
Particles >71µm	ASTM D7647	>3	<b>---</b>	0	0
Oil Cleanliness	ISO 4406 (c)	>--/17/13	<b>---</b>	▲ 18/14	▲ 21/18

## FLUID DEGRADATION

	method	limit/base	current	history 1	history 2
Acid Number (AN)	mg KOH/g ASTM D8045	1.0	<b>0.38</b>	0.36	0.295

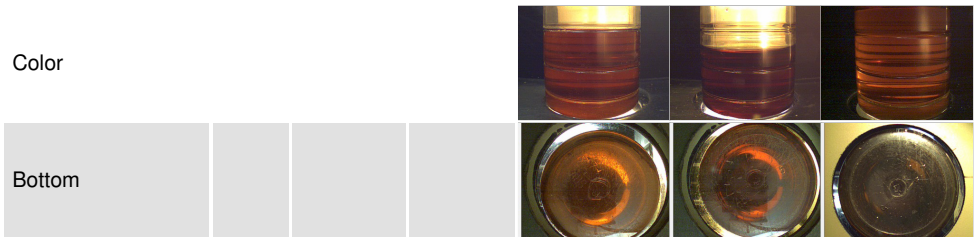
# OIL ANALYSIS REPORT



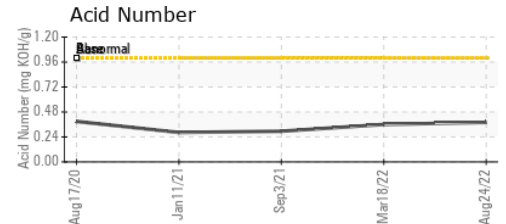
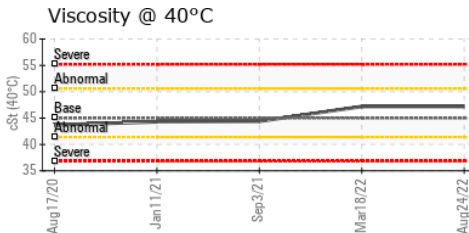
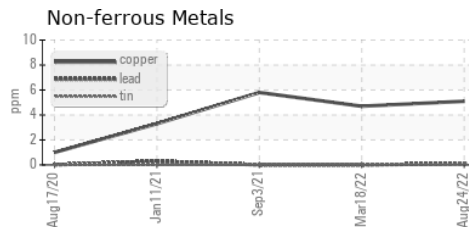
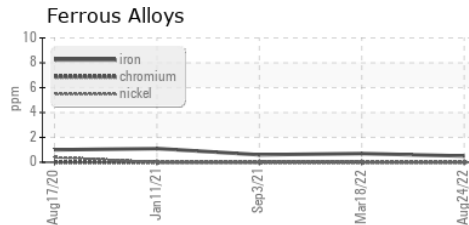
VISUAL	method	limit/base	current	history 1	history 2
White Metal	scalar	*Visual	NONE	NONE	NONE
Yellow Metal	scalar	*Visual	NONE	NONE	NONE
Precipitate	scalar	*Visual	NONE	NONE	NONE
Silt	scalar	*Visual	NONE	NONE	NONE
Debris	scalar	*Visual	▲ MODER	NONE	NONE
Sand/Dirt	scalar	*Visual	NONE	NONE	NONE
Appearance	scalar	*Visual	NORML	NORML	NORML
Odor	scalar	*Visual	NORML	NORML	NORML
Emulsified Water	scalar	*Visual	>0.05	NEG	NEG
Free Water	scalar	*Visual		NEG	NEG

FLUID PROPERTIES	method	limit/base	current	history 1	history 2
Visc @ 40°C	cSt	ASTM D445	45	47.2	44.4

SAMPLE IMAGES	method	limit/base	current	history 1	history 2
---------------	--------	------------	---------	-----------	-----------



## GRAPHS



Certificate L2367

**Laboratory** : WearCheck USA - 501 Madison Ave., Cary, NC 27513  
**Sample No.** : KCP48417 **Received** : 13 Sep 2022  
**Lab Number** : 05640358 **Diagnosed** : 15 Sep 2022  
**Unique Number** : 10129888 **Diagnostician** : Doug Bogart  
**Test Package** : IND 2 ( Additional Tests: KF, PrtCount )

**PAUL DOWNS**  
 401 E 4TH ST  
 BRIDGEPORT, PA  
 USA 19405  
 Contact: Service Manager

To discuss this sample report, contact Customer Service at 1-800-237-1369.

\* - Denotes test methods that are outside of the ISO 17025 scope of accreditation.

Statements of conformity to specifications are based on the simple acceptance decision rule (JCGM 106:2012)

T:  
F: