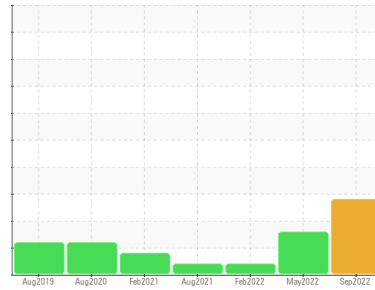


PROBLEM SUMMARY

Sample Rating Trend



WATER



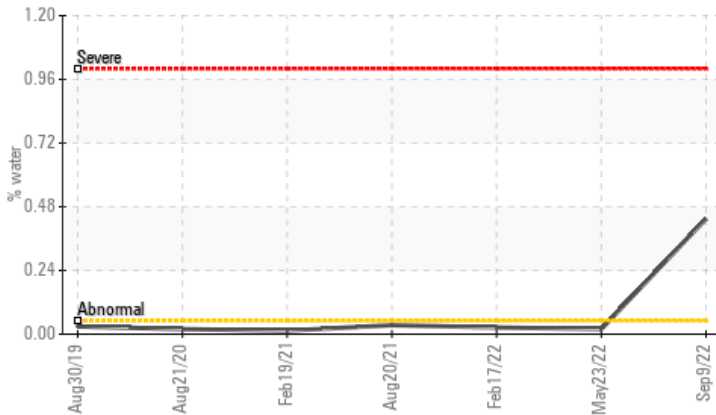
Machine Id
KAESER SK 15 6597528 (S/N 1235)

Component
Compressor

Fluid
KAESER SIGMA (OEM) M-460 (--- GAL)

COMPONENT CONDITION SUMMARY

▲ Water



RECOMMENDATION

Oil and filter change at the time of sampling has been noted. We were unable to perform a particle count due to a high concentration of particles present in this sample. We recommend an early resample in 500 hours to monitor this condition.

PROBLEMATIC TEST RESULTS

Sample Status				ABNORMAL	ABNORMAL	ATTENTION
Water	%	ASTM D6304	>0.05	▲ 0.435	0.019	0.025
ppm Water	ppm	ASTM D6304	>500	▲ 4350	192.1	251.6
Debris	scalar	*Visual	NONE	▲ MODER	NONE	NONE
Appearance	scalar	*Visual	NORML	▲ HAZY	NORML	NORML

Customer Id: JOHSHEKC
Sample No.: KCP30962
Lab Number: 05640371
Test Package: IND 2



To manage this report scan the QR code

To discuss the diagnosis or test data:
Jonathan Hester +1 919-379-4092 x4092
jhester@wearcheckusa.com

To change component or sample information:
Customer Service +1 1-800-237-1369
customerservice@wearcheck.com

RECOMMENDED ACTIONS

Action	Status	Date	Done By	Description
Change Fluid	---	---	?	Oil and filter change at the time of sampling has been noted.
Change Filter	---	---	?	Oil and filter change at the time of sampling has been noted.
Alert	---	---	?	We were unable to perform a particle count due to a high concentration of particles present in this sample.

HISTORICAL DIAGNOSIS

23 May 2022 Diag: Jonathan Hester

ISO



Oil and filter change at the time of sampling has been noted. Resample at the next service interval to monitor. All component wear rates are normal. There is a high amount of particulates present in the oil. The AN level is acceptable for this fluid. The condition of the oil is suitable for further service.

view report



17 Feb 2022 Diag: Angela Borella

ISO



Oil and filter change at the time of sampling has been noted. Resample at the next service interval to monitor. All component wear rates are normal. There is a moderate amount of silt (particulates < 14 microns in size) present in the oil. The AN level is acceptable for this fluid. The condition of the oil is suitable for further service.

view report



20 Aug 2021 Diag: Jonathan Hester

VIS DEBRIS



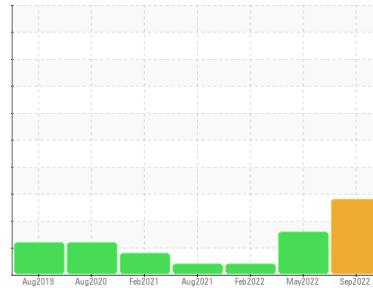
Oil and filter change at the time of sampling has been noted. Resample at the next service interval to monitor. We were unable to perform a particle count due to a high concentration of particles present in this sample. All component wear rates are normal. Moderate concentration of visible dirt/debris present in the oil. The AN level is acceptable for this fluid. The condition of the oil is suitable for further service.

view report



Machine Id
KAESER SK 15 6597528 (S/N 1235)

Component
Compressor
Fluid
KAESER SIGMA (OEM) M-460 (--- GAL)



DIAGNOSIS

Recommendation

Oil and filter change at the time of sampling has been noted. We were unable to perform a particle count due to a high concentration of particles present in this sample. We recommend an early resample in 500 hours to monitor this condition.

Wear

All component wear rates are normal.

Contamination

Appearance is hazy. There is a moderate concentration of water present in the oil.

Fluid Condition

The AN level is acceptable for this fluid.

SAMPLE INFORMATION

	method	limit/base	current	history 1	history 2
Sample Number			KCP30962	KCP50942	KCP42005
Sample Date			09 Sep 2022	23 May 2022	17 Feb 2022
Machine Age	hrs		0	10130	8093
Oil Age	hrs		3000	1500	1
Oil Changed			Changed	Changed	Changed
Sample Status			ABNORMAL	ABNORMAL	ATTENTION

WEAR METALS

	method	limit/base	current	history 1	history 2
Iron	ppm	ASTM D5185m >50	<1	<1	0
Chromium	ppm	ASTM D5185m >10	0	0	0
Nickel	ppm	ASTM D5185m >3	0	0	0
Titanium	ppm	ASTM D5185m >3	0	0	0
Silver	ppm	ASTM D5185m >2	<1	0	<1
Aluminum	ppm	ASTM D5185m >10	1	<1	1
Lead	ppm	ASTM D5185m >10	<1	0	<1
Copper	ppm	ASTM D5185m >50	1	2	2
Tin	ppm	ASTM D5185m >10	0	0	<1
Antimony	ppm	ASTM D5185m	---	---	---
Vanadium	ppm	ASTM D5185m	0	0	0
Cadmium	ppm	ASTM D5185m	<1	0	0

ADDITIVES

	method	limit/base	current	history 1	history 2
Boron	ppm	ASTM D5185m 0	0	2	0
Barium	ppm	ASTM D5185m 90	16	20	8
Molybdenum	ppm	ASTM D5185m 0	0	0	0
Manganese	ppm	ASTM D5185m	<1	0	0
Magnesium	ppm	ASTM D5185m 100	36	32	73
Calcium	ppm	ASTM D5185m 0	3	2	<1
Phosphorus	ppm	ASTM D5185m 0	3	4	8
Zinc	ppm	ASTM D5185m 0	4	3	4
Sulfur	ppm	ASTM D5185m 23500	18533	21772	18555

CONTAMINANTS

	method	limit/base	current	history 1	history 2
Silicon	ppm	ASTM D5185m >25	<1	<1	<1
Sodium	ppm	ASTM D5185m	3	5	8
Potassium	ppm	ASTM D5185m >20	1	0	2
Water	%	ASTM D6304 >0.05	▲ 0.435	0.019	0.025
ppm Water	ppm	ASTM D6304 >500	▲ 4350	192.1	251.6

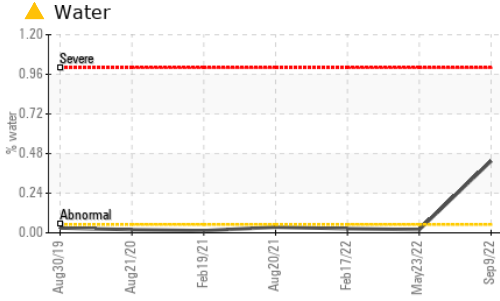
FLUID CLEANLINESS

	method	limit/base	current	history 1	history 2
Particles >4µm	ASTM D7647		---	15842	5723
Particles >6µm	ASTM D7647	>1300	---	▲ 4278	▲ 1404
Particles >14µm	ASTM D7647	>80	---	▲ 288	57
Particles >21µm	ASTM D7647	>20	---	▲ 73	8
Particles >38µm	ASTM D7647	>4	---	1	0
Particles >71µm	ASTM D7647	>3	---	0	0
Oil Cleanliness	ISO 4406 (c)	>--/17/13	---	▲ 21/19/15	▲ 18/13

FLUID DEGRADATION

	method	limit/base	current	history 1	history 2
Acid Number (AN)	mg KOH/g	ASTM D8045 1.0	0.41	0.40	0.43

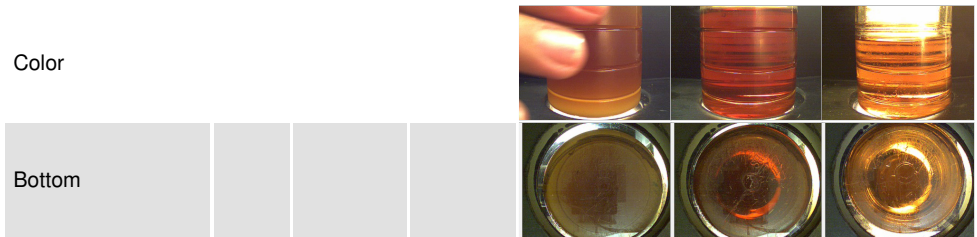
OIL ANALYSIS REPORT



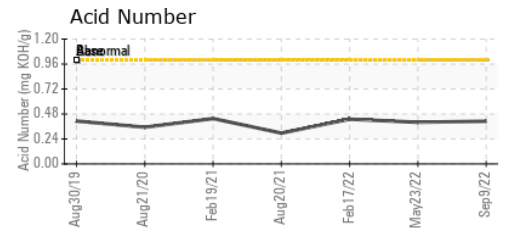
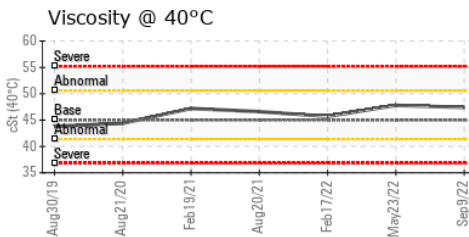
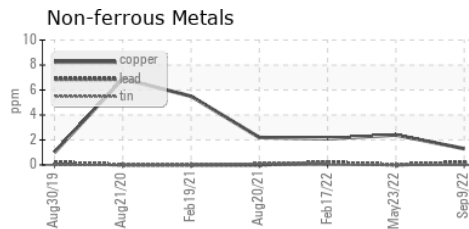
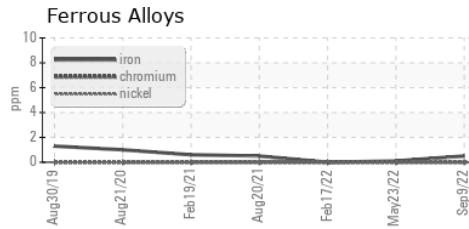
VISUAL	method	limit/base	current	history 1	history 2
White Metal	scalar	*Visual	NONE	NONE	NONE
Yellow Metal	scalar	*Visual	NONE	NONE	NONE
Precipitate	scalar	*Visual	NONE	NONE	NONE
Silt	scalar	*Visual	NONE	NONE	NONE
Debris	scalar	*Visual	▲ MODER	NONE	NONE
Sand/Dirt	scalar	*Visual	NONE	NONE	NONE
Appearance	scalar	*Visual	▲ HAZY	NORML	NORML
Odor	scalar	*Visual	NORML	NORML	NORML
Emulsified Water	scalar	*Visual	>0.05	0.2%	NEG
Free Water	scalar	*Visual		NEG	NEG

FLUID PROPERTIES	method	limit/base	current	history 1	history 2
Visc @ 40°C	cSt	ASTM D445	45	47.4	47.8

SAMPLE IMAGES	method	limit/base	current	history 1	history 2
---------------	--------	------------	---------	-----------	-----------



GRAPHS



Certificate L2367

Laboratory : WearCheck USA - 501 Madison Ave., Cary, NC 27513
Sample No. : KCP30962 **Received** : 13 Sep 2022
Lab Number : 05640371 **Diagnosed** : 15 Sep 2022
Unique Number : 10129901 **Diagnostician** : Jonathan Hester
Test Package : IND 2 (Additional Tests: KF, PrtCount)

JOHNSONVILLE SAUSAGE LLC
 N7078 JOHNSONVILLE WAY
 SHEBOYGAN FALLS, WI
 USA 53085
 Contact:

To discuss this sample report, contact Customer Service at 1-800-237-1369.

* - Denotes test methods that are outside of the ISO 17025 scope of accreditation.

Statements of conformity to specifications are based on the simple acceptance decision rule (JCGM 106:2012)

T:
F: