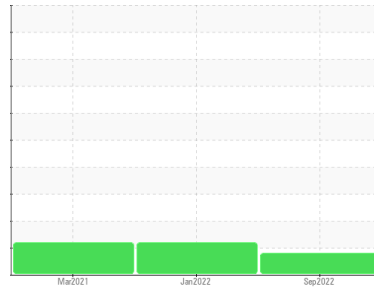


PROBLEM SUMMARY

Sample Rating Trend



ISO



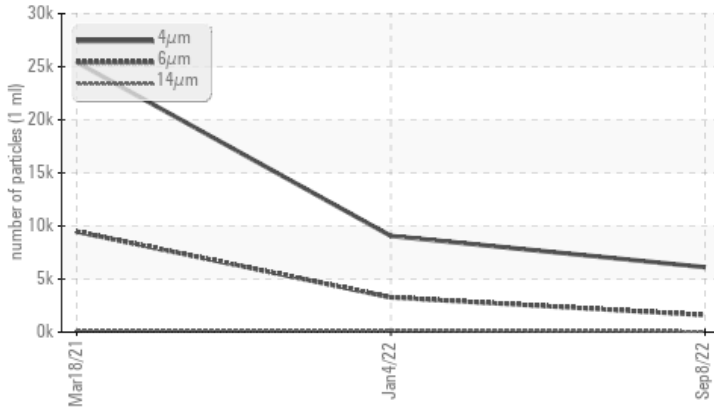
Machine Id
KAESER 7417860

Component
Compressor

Fluid
KAESER SIGMA (OEM) S-460 (--- GAL)

COMPONENT CONDITION SUMMARY

▲ Particle Trend



RECOMMENDATION

No corrective action is recommended at this time. The filter change at the time of sampling has been noted. Resample at the next service interval to monitor.

PROBLEMATIC TEST RESULTS

Sample Status		ATTENTION	ABNORMAL	ABNORMAL
Particles >6µm	ASTM D7647 >1300	▲ 1612	▲ 3271	▲ 9472
Oil Cleanliness	ISO 4406 (c) >--/17/13	▲ 20/18/13	▲ 19/14	▲ 20/15

Customer Id: VICSTROH
Sample No.: KC104503
Lab Number: 05641626
Test Package: IND 2



To manage this report scan the QR code

To discuss the diagnosis or test data:
Angela Borella +1 800-237-1369
angela.borella@wearcheckusa.com

To change component or sample information:
Customer Service +1 1-800-237-1369
customerservice@wearcheck.com

RECOMMENDED ACTIONS

There are no recommended actions for this sample.

HISTORICAL DIAGNOSIS

04 Jan 2022 Diag: Don Baldrige

ISO



No corrective action is recommended at this time. Oil and filter change at the time of sampling has been noted. Resample at the next service interval to monitor. All component wear rates are normal. There is a high amount of particulates present in the oil. The AN level is acceptable for this fluid. The condition of the oil is suitable for further service.

view report



18 Mar 2021 Diag: Don Baldrige

ADDITIVES

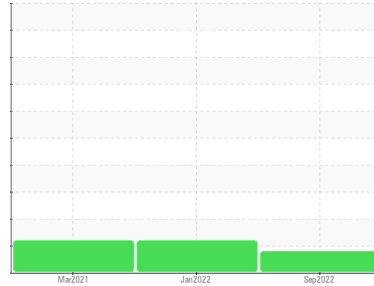


No corrective action is recommended at this time. Oil and filter change at the time of sampling has been noted. Resample at the next service interval to monitor. All component wear rates are normal. There is a high amount of particulates present in the oil. The AN level is acceptable for this fluid. The condition of the oil is suitable for further service.

view report



Machine Id
KAESER 7417860
Component
Compressor
Fluid
KAESER SIGMA (OEM) S-460 (--- GAL)



DIAGNOSIS

▲ Recommendation

No corrective action is recommended at this time. The filter change at the time of sampling has been noted. Resample at the next service interval to monitor.

Wear

All component wear rates are normal.

▲ Contamination

There is a moderate amount of silt (particulates < 14 microns in size) present in the oil.

Fluid Condition

The AN level is acceptable for this fluid. The condition of the oil is suitable for further service.

SAMPLE INFORMATION

	method	limit/base	current	history 1	history 2
Sample Number			KC104503	KC95780	KC92697
Sample Date			08 Sep 2022	04 Jan 2022	18 Mar 2021
Machine Age	hrs		5318	3580	1276
Oil Age	hrs		1738	2304	1276
Oil Changed			Not Changed	Changed	Changed
Sample Status			ATTENTION	ABNORMAL	ABNORMAL

WEAR METALS

	method	limit/base	current	history 1	history 2
Iron	ppm	ASTM D5185m >50	<1	<1	2
Chromium	ppm	ASTM D5185m >10	0	0	0
Nickel	ppm	ASTM D5185m >3	0	0	0
Titanium	ppm	ASTM D5185m >3	0	0	0
Silver	ppm	ASTM D5185m >2	0	0	<1
Aluminum	ppm	ASTM D5185m >10	<1	0	0
Lead	ppm	ASTM D5185m >10	0	0	0
Copper	ppm	ASTM D5185m >50	2	6	2
Tin	ppm	ASTM D5185m >10	0	0	0
Antimony	ppm	ASTM D5185m	---	2	0
Vanadium	ppm	ASTM D5185m	0	0	0
Cadmium	ppm	ASTM D5185m	0	0	0

ADDITIVES

	method	limit/base	current	history 1	history 2
Boron	ppm	ASTM D5185m	0	0	<1
Barium	ppm	ASTM D5185m 90	43	0	▲ 2
Molybdenum	ppm	ASTM D5185m	0	0	0
Manganese	ppm	ASTM D5185m	0	0	<1
Magnesium	ppm	ASTM D5185m 90	73	2	37
Calcium	ppm	ASTM D5185m 2	2	0	<1
Phosphorus	ppm	ASTM D5185m	3	3	5
Zinc	ppm	ASTM D5185m	6	0	16

CONTAMINANTS

	method	limit/base	current	history 1	history 2
Silicon	ppm	ASTM D5185m >25	2	<1	0
Sodium	ppm	ASTM D5185m	8	0	8
Potassium	ppm	ASTM D5185m >20	<1	0	3
Water	%	ASTM D6304 >0.05	0.014	0.001	0.015
ppm Water	ppm	ASTM D6304 >500	145.6	12.7	159.5

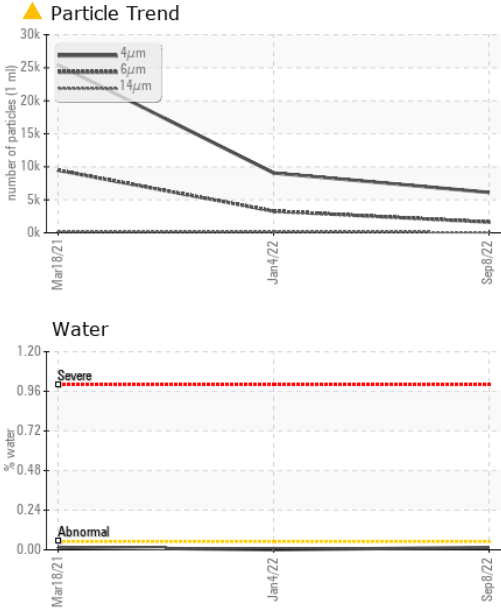
FLUID CLEANLINESS

	method	limit/base	current	history 1	history 2
Particles >4µm	ASTM D7647		6113	9059	25430
Particles >6µm	ASTM D7647 >1300		▲ 1612	▲ 3271	▲ 9472
Particles >14µm	ASTM D7647 >80		65	▲ 152	▲ 199
Particles >21µm	ASTM D7647 >20		14	▲ 24	13
Particles >38µm	ASTM D7647 >4		0	1	0
Particles >71µm	ASTM D7647 >3		0	0	0
Oil Cleanliness	ISO 4406 (c)	>--/17/13	▲ 20/18/13	▲ 19/14	▲ 20/15

FLUID DEGRADATION

	method	limit/base	current	history 1	history 2
Acid Number (AN)	mg KOH/g	ASTM D8045 0.4	0.38	0.446	0.455

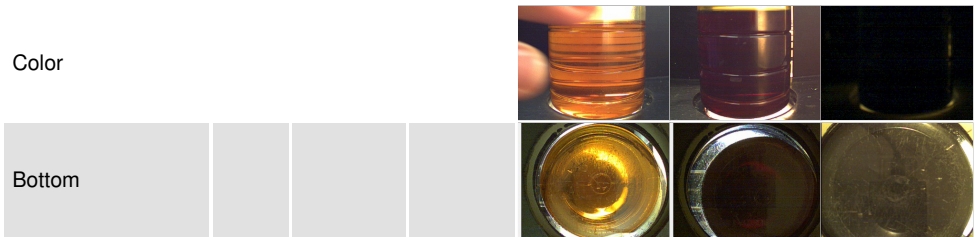
OIL ANALYSIS REPORT



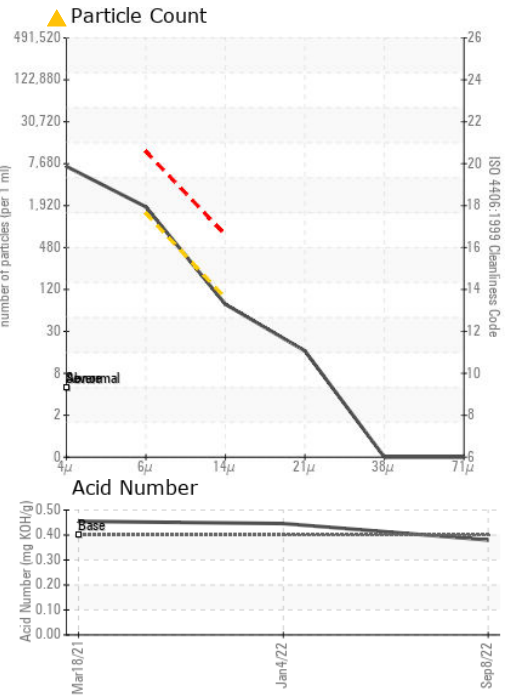
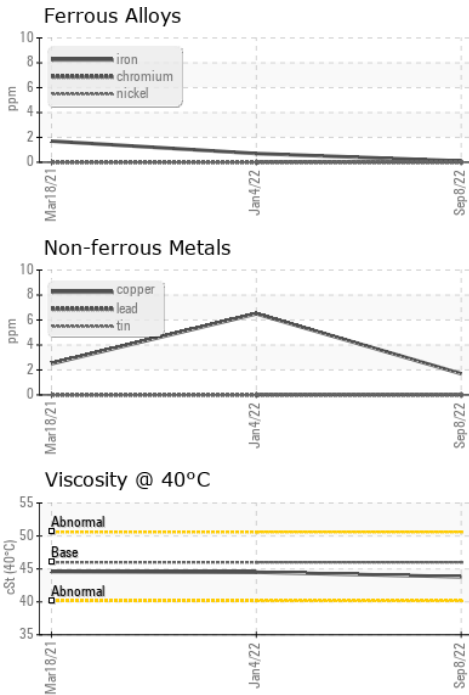
VISUAL	method	limit/base	current	history 1	history 2
White Metal	scalar	*Visual	NONE	NONE	LIGHT
Yellow Metal	scalar	*Visual	NONE	NONE	NONE
Precipitate	scalar	*Visual	NONE	NONE	NONE
Silt	scalar	*Visual	NONE	NONE	NONE
Debris	scalar	*Visual	NONE	NONE	NONE
Sand/Dirt	scalar	*Visual	NONE	NONE	NONE
Appearance	scalar	*Visual	NORML	NORML	NORML
Odor	scalar	*Visual	NORML	NORML	NORML
Emulsified Water	scalar	*Visual	>0.05	NEG	NEG
Free Water	scalar	*Visual		NEG	NEG

FLUID PROPERTIES	method	limit/base	current	history 1	history 2
Visc @ 40°C	cSt	ASTM D445 46	43.8	44.5	44.6

SAMPLE IMAGES	method	limit/base	current	history 1	history 2
---------------	--------	------------	---------	-----------	-----------



GRAPHS



Laboratory : WearCheck USA - 501 Madison Ave., Cary, NC 27513
Sample No. : KC104503 **Received** : 14 Sep 2022
Lab Number : 05641626 **Diagnosed** : 15 Sep 2022
Unique Number : 10131156 **Diagnostician** : Angela Borella
Test Package : IND 2

VICCARONE
 14170 FOLTZ PKWY
 STRONGSVILLE, OH
 USA 44149
 Contact: Service Manager

To discuss this sample report, contact Customer Service at 1-800-237-1369.

* - Denotes test methods that are outside of the ISO 17025 scope of accreditation.

Statements of conformity to specifications are based on the simple acceptance decision rule (JCGM 106:2012)

T:
F: