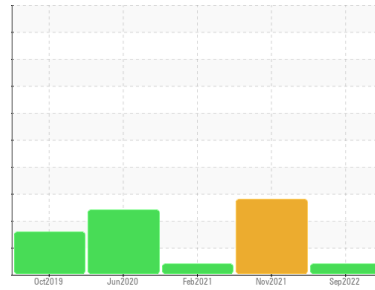


PROBLEM SUMMARY

Sample Rating Trend



VIS DEBRIS



Machine Id
KAESER AS 30T 6350392 (S/N 1128)
Component
Compressor
Fluid
KAESER SIGMA (OEM) S-460 (--- QTS)

COMPONENT CONDITION SUMMARY

No relevant graphs to display

RECOMMENDATION

No corrective action is recommended at this time. The filter change at the time of sampling has been noted. Resample at the next service interval to monitor.

PROBLEMATIC TEST RESULTS

Sample Status				ABNORMAL	ABNORMAL	ABNORMAL
Debris	scalar	*Visual	NONE	▲ MODER	▲ MODER	▲ MODER

Customer Id: LINGRAKC
Sample No.: KCP46301
Lab Number: 05644276
Test Package: IND 2



To manage this report scan the QR code

To discuss the diagnosis or test data:
Don Baldrige +1
don.b505@comcast.net

To change component or sample information:
Customer Service +1 1-800-237-1369
customerservice@wearcheck.com

RECOMMENDED ACTIONS

There are no recommended actions for this sample.

HISTORICAL DIAGNOSIS

04 Nov 2021 Diag: Doug Bogart

WATER



The filter change at the time of sampling has been noted. We advise that you stop the unit and follow the water drain-off procedure for this component. We recommend an early resample in 500 hours to monitor this condition. We were unable to perform a particle count due to a high concentration of particles present in this sample. All component wear rates are normal. Moderate concentration of visible dirt/debris present in the oil. There is a light concentration of water present in the oil. The AN level is acceptable for this fluid. The condition of the oil is suitable for further service.

view report



24 Feb 2021 Diag: Don Baldrige

VIS DEBRIS



No corrective action is recommended at this time. Oil and filter change at the time of sampling has been noted. Resample at the next service interval to monitor. We were unable to perform a particle count due to a high concentration of particles present in this sample. All component wear rates are normal. Moderate concentration of visible dirt/debris present in the oil. The AN level is acceptable for this fluid. The condition of the oil is suitable for further service.

view report



22 Jun 2020 Diag: Angela Borella

WATER

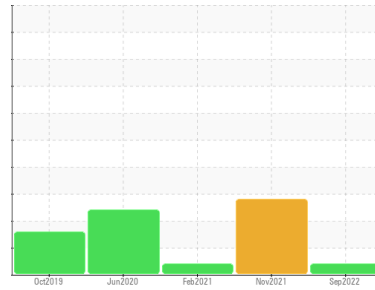


We advise that you shut down the unit and follow the water drain-off procedure for this component. The filter change at the time of sampling has been noted. We recommend an early resample to monitor this condition. We were unable to perform a particle count due to a high concentration of particles present in this sample. All component wear rates are normal. There is a light concentration of water present in the oil. Elemental level of silicon (Si) above normal indicating ingress of seal material. The AN level is acceptable for this fluid. The condition of the oil is suitable for further service.

view report



Machine Id
KAESER AS 30T 6350392 (S/N 1128)
Component
Compressor
Fluid
KAESER SIGMA (OEM) S-460 (--- QTS)



DIAGNOSIS

▲ Recommendation

No corrective action is recommended at this time. The filter change at the time of sampling has been noted. Resample at the next service interval to monitor.

Wear

All component wear rates are normal.

▲ Contamination

Moderate concentration of visible dirt/debris present in the oil. The amount and size of particulates present in the system are acceptable.

Fluid Condition

The AN level is acceptable for this fluid. The condition of the oil is suitable for further service.

SAMPLE INFORMATION

	method	limit/base	current	history 1	history 2
Sample Number			KCP46301	KCP43423	KCP27574
Sample Date			12 Sep 2022	04 Nov 2021	24 Feb 2021
Machine Age	hrs		5801	3878	2654
Oil Age	hrs		3147	3878	1500
Oil Changed			Not Changed	Not Changed	Changed
Sample Status			ABNORMAL	ABNORMAL	ABNORMAL

WEAR METALS

	method	limit/base	current	history 1	history 2
Iron	ppm ASTM D5185m	>50	0	<1	<1
Chromium	ppm ASTM D5185m	>10	0	0	0
Nickel	ppm ASTM D5185m	>3	0	0	0
Titanium	ppm ASTM D5185m	>3	0	0	0
Silver	ppm ASTM D5185m	>2	0	<1	<1
Aluminum	ppm ASTM D5185m	>10	0	<1	0
Lead	ppm ASTM D5185m	>10	0	0	<1
Copper	ppm ASTM D5185m	>50	18	8	9
Tin	ppm ASTM D5185m	>10	0	0	0
Antimony	ppm ASTM D5185m		---	0	0
Vanadium	ppm ASTM D5185m		0	0	0
Cadmium	ppm ASTM D5185m		0	<1	0

ADDITIVES

	method	limit/base	current	history 1	history 2
Boron	ppm ASTM D5185m		0	<1	<1
Barium	ppm ASTM D5185m	90	<1	<1	0
Molybdenum	ppm ASTM D5185m		0	0	0
Manganese	ppm ASTM D5185m		0	<1	<1
Magnesium	ppm ASTM D5185m	90	10	43	51
Calcium	ppm ASTM D5185m	2	0	<1	<1
Phosphorus	ppm ASTM D5185m		3	8	3
Zinc	ppm ASTM D5185m		24	3	2
Sulfur	ppm ASTM D5185m		16806	16298	15928

CONTAMINANTS

	method	limit/base	current	history 1	history 2
Silicon	ppm ASTM D5185m	>25	0	0	0
Sodium	ppm ASTM D5185m		3	17	27
Potassium	ppm ASTM D5185m	>20	0	3	4
Water	% ASTM D6304	>0.05	0.020	▲ 0.159	0.026
ppm Water	ppm ASTM D6304	>500	207.3	▲ 1590	269.5

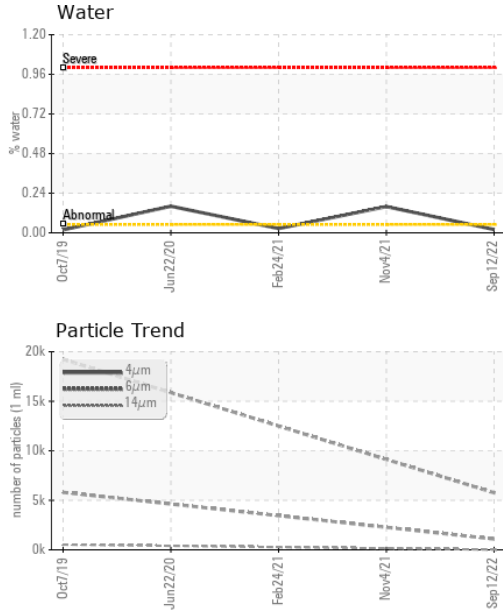
FLUID CLEANLINESS

	method	limit/base	current	history 1	history 2
Particles >4µm	ASTM D7647		5759	---	---
Particles >6µm	ASTM D7647	>1300	1090	---	---
Particles >14µm	ASTM D7647	>80	18	---	---
Particles >21µm	ASTM D7647	>20	3	---	---
Particles >38µm	ASTM D7647	>4	0	---	---
Particles >71µm	ASTM D7647	>3	0	---	---
Oil Cleanliness	ISO 4406 (c)	>--/17/13	20/17/11	---	---

FLUID DEGRADATION

	method	limit/base	current	history 1	history 2
Acid Number (AN)	mg KOH/g ASTM D8045	0.4	0.36	0.312	0.291

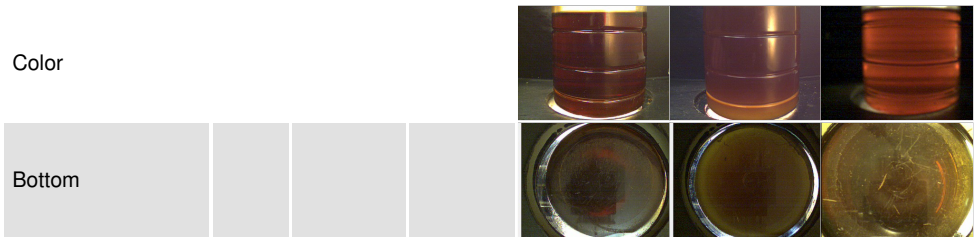
OIL ANALYSIS REPORT



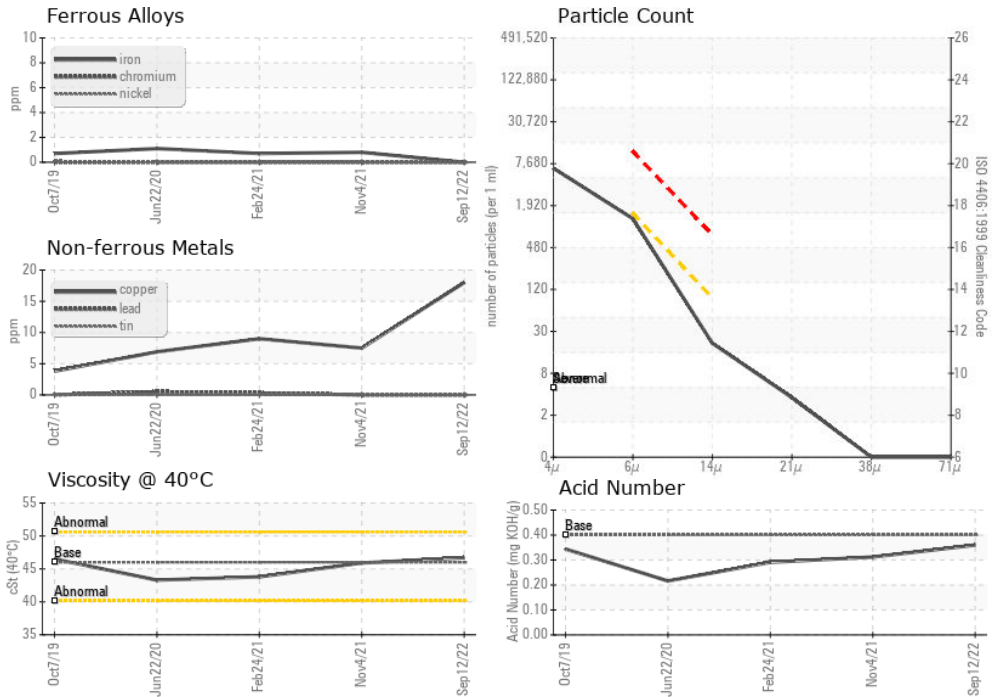
VISUAL	method	limit/base	current	history 1	history 2
White Metal	scalar	*Visual	NONE	NONE	NONE
Yellow Metal	scalar	*Visual	NONE	NONE	NONE
Precipitate	scalar	*Visual	NONE	NONE	NONE
Silt	scalar	*Visual	NONE	NONE	NONE
Debris	scalar	*Visual	NONE	▲ MODER	▲ MODER
Sand/Dirt	scalar	*Visual	NONE	NONE	NONE
Appearance	scalar	*Visual	NORML	▲ HAZY	NORML
Odor	scalar	*Visual	NORML	NORML	NORML
Emulsified Water	scalar	*Visual	>0.05	NEG	0.2%
Free Water	scalar	*Visual		NEG	NEG

FLUID PROPERTIES	method	limit/base	current	history 1	history 2
Visc @ 40°C	cSt	ASTM D445	46	46.7	45.9

SAMPLE IMAGES	method	limit/base	current	history 1	history 2
---------------	--------	------------	---------	-----------	-----------



GRAPHS



Laboratory : WearCheck USA - 501 Madison Ave., Cary, NC 27513
Sample No. : KCP46301 **Received** : 16 Sep 2022
Lab Number : 05644276 **Diagnosed** : 20 Sep 2022
Unique Number : 10138815 **Diagnostician** : Don Baldrige
Test Package : IND 2 (Additional Tests: KF, PrtCount)

LINDLEY MILLS INC
 7763 LINDLEY MILLS RD
 GRAHAM, NC
 USA 27253
 Contact: SERVICE MANAGER

To discuss this sample report, contact Customer Service at 1-800-237-1369.
 * - Denotes test methods that are outside of the ISO 17025 scope of accreditation.
 Statements of conformity to specifications are based on the simple acceptance decision rule (JCGM 106:2012)