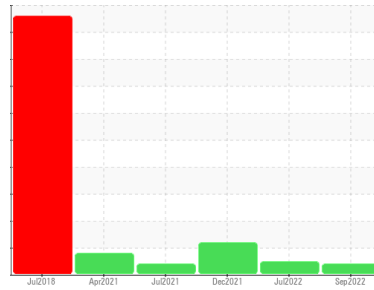


PROBLEM SUMMARY

Sample Rating Trend



VIS DEBRIS



Machine Id
KAESER CSD 60 2474982 (S/N 1023)
Component
Compressor
Fluid
KAESER SIGMA (OEM) FG-460 (--- GAL)

COMPONENT CONDITION SUMMARY

No relevant graphs to display

RECOMMENDATION

No corrective action is recommended at this time. Oil and filter change at the time of sampling has been noted. Resample at the next service interval to monitor. We were unable to perform a particle count due to a high concentration of particles present in this sample.

PROBLEMATIC TEST RESULTS

Sample Status		ABNORMAL			ATTENTION	
Debris	scalar *Visual	NONE	▲ MODER	NONE	NONE	NONE

Customer Id: DARLEO
Sample No.: KCP50242
Lab Number: 05645538
Test Package: IND 2



To manage this report scan the QR code

To discuss the diagnosis or test data:
Jonathan Hester +1 919-379-4092 x4092
jhester@wearcheckusa.com

To change component or sample information:
Customer Service +1 1-800-237-1369
customerservice@wearcheck.com

RECOMMENDED ACTIONS

Action	Status	Date	Done By	Description
Change Fluid	---	---	?	Oil and filter change at the time of sampling has been noted.
Change Filter	---	---	?	Oil and filter change at the time of sampling has been noted.
Alert	---	---	?	We were unable to perform a particle count due to a high concentration of particles present in this sample.

HISTORICAL DIAGNOSIS

01 Jul 2022 Diag:

UNKNOWN



view report



02 Dec 2021 Diag: Angela Borella

ISO



No corrective action is recommended at this time. Oil and filter change at the time of sampling has been noted. Resample at the next service interval to monitor. All component wear rates are normal. There is a moderate amount of particulates present in the oil. The AN level is acceptable for this fluid. The condition of the oil is suitable for further service.

view report



16 Jul 2021 Diag: Don Baldrige

VIS DEBRIS



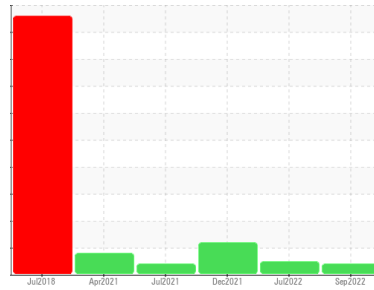
No corrective action is recommended at this time. Oil and filter change at the time of sampling has been noted. Resample at the next service interval to monitor. We were unable to perform a particle count due to a high concentration of particles present in this sample. All component wear rates are normal. Moderate concentration of visible dirt/debris present in the oil. The AN level is acceptable for this fluid. The condition of the oil is suitable for further service.

view report



Machine Id
KAESER CSD 60 2474982 (S/N 1023)

Component
Compressor
Fluid
KAESER SIGMA (OEM) FG-460 (--- GAL)



DIAGNOSIS

▲ Recommendation

No corrective action is recommended at this time. Oil and filter change at the time of sampling has been noted. Resample at the next service interval to monitor. We were unable to perform a particle count due to a high concentration of particles present in this sample.

Wear

All component wear rates are normal.

▲ Contamination

Moderate concentration of visible dirt/debris present in the oil.

Fluid Condition

The AN level is acceptable for this fluid. The condition of the oil is suitable for further service.

SAMPLE INFORMATION

	method	limit/base	current	history 1	history 2
Sample Number			KCP50242	KCP40541	KCP39522
Sample Date			09 Sep 2022	01 Jul 2022	02 Dec 2021
Machine Age	hrs		57582	56761	53029
Oil Age	hrs		4282	56761	0
Oil Changed			Changed	Changed	Changed
Sample Status			ABNORMAL	---	ATTENTION

WEAR METALS

	method	limit/base	current	history 1	history 2
Iron	ppm	ASTM D5185m >50	<1	<1	1
Chromium	ppm	ASTM D5185m >10	0	0	0
Nickel	ppm	ASTM D5185m >3	0	0	0
Titanium	ppm	ASTM D5185m >3	0	0	0
Silver	ppm	ASTM D5185m >2	<1	0	<1
Aluminum	ppm	ASTM D5185m >10	3	3	8
Lead	ppm	ASTM D5185m >10	<1	0	0
Copper	ppm	ASTM D5185m >50	22	3	3
Tin	ppm	ASTM D5185m >10	0	0	<1
Antimony	ppm	ASTM D5185m	---	---	0
Vanadium	ppm	ASTM D5185m	0	0	0
Cadmium	ppm	ASTM D5185m	0	0	0

ADDITIVES

	method	limit/base	current	history 1	history 2
Boron	ppm	ASTM D5185m	0	0	2
Barium	ppm	ASTM D5185m	0	0	0
Molybdenum	ppm	ASTM D5185m	0	0	0
Manganese	ppm	ASTM D5185m	0	0	0
Magnesium	ppm	ASTM D5185m	3	0	<1
Calcium	ppm	ASTM D5185m	0	0	0
Phosphorus	ppm	ASTM D5185m 500	28	▲ 47	191
Zinc	ppm	ASTM D5185m	17	▲ 10	66
Sulfur	ppm	ASTM D5185m	5935	▲ 3977	1235

CONTAMINANTS

	method	limit/base	current	history 1	history 2
Silicon	ppm	ASTM D5185m >25	<1	<1	0
Sodium	ppm	ASTM D5185m	4	0	<1
Potassium	ppm	ASTM D5185m >20	0	0	0
Water	%	ASTM D6304 >0.05	0.007	0.006	0.003
ppm Water	ppm	ASTM D6304 >500	70.2	61.6	38.9

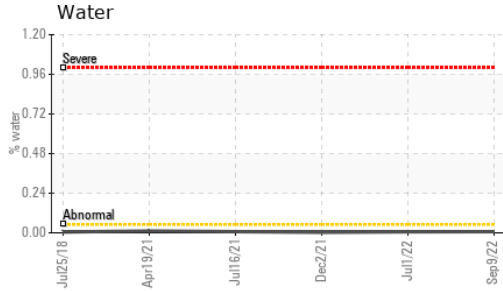
FLUID CLEANLINESS

	method	limit/base	current	history 1	history 2
Particles >4µm	ASTM D7647		---	22596	8366
Particles >6µm	ASTM D7647 >1300		---	▲ 4252	▲ 2009
Particles >14µm	ASTM D7647 >80		---	▲ 220	▲ 141
Particles >21µm	ASTM D7647 >20		---	▲ 57	▲ 40
Particles >38µm	ASTM D7647 >4		---	▲ 8	0
Particles >71µm	ASTM D7647 >3		---	0	0
Oil Cleanliness	ISO 4406 (c) >--/17/13		---	▲ 22/19/15	▲ 18/14

FLUID DEGRADATION

	method	limit/base	current	history 1	history 2
Acid Number (AN)	mg KOH/g	ASTM D8045 1.5	0.24	0.35	0.567

OIL ANALYSIS REPORT

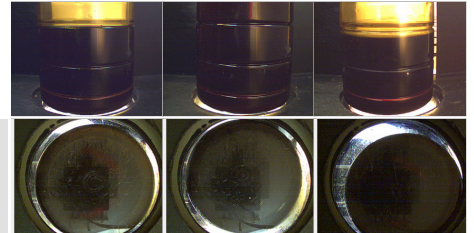


VISUAL	method	limit/base	current	history 1	history 2
White Metal	scalar	*Visual	NONE	NONE	NONE
Yellow Metal	scalar	*Visual	NONE	NONE	NONE
Precipitate	scalar	*Visual	NONE	NONE	NONE
Silt	scalar	*Visual	NONE	NONE	NONE
Debris	scalar	*Visual	NONE	▲ MODER	NONE
Sand/Dirt	scalar	*Visual	NONE	NONE	NONE
Appearance	scalar	*Visual	NORML	NORML	NORML
Odor	scalar	*Visual	NORML	NORML	NORML
Emulsified Water	scalar	*Visual	>0.05	NEG	NEG
Free Water	scalar	*Visual		NEG	NEG

FLUID PROPERTIES	method	limit/base	current	history 1	history 2
Visc @ 40°C	cSt	ASTM D445	46	49.2	48.4

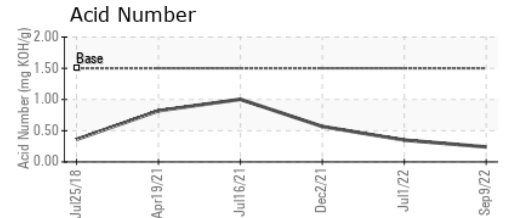
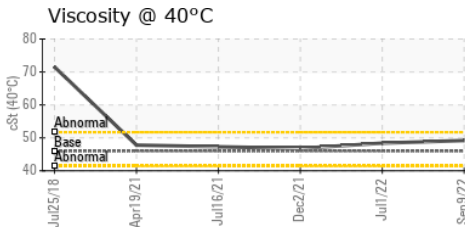
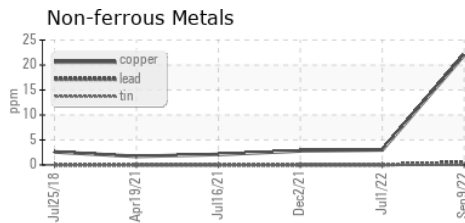
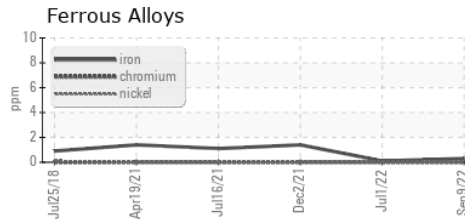
SAMPLE IMAGES	method	limit/base	current	history 1	history 2
---------------	--------	------------	---------	-----------	-----------

Color



Bottom

GRAPHS



Certificate L2367

Laboratory : WearCheck USA - 501 Madison Ave., Cary, NC 27513
Sample No. : KCP50242 **Received** : 19 Sep 2022
Lab Number : 05645538 **Diagnosed** : 21 Sep 2022
Unique Number : 10140077 **Diagnostician** : Jonathan Hester
Test Package : IND 2 (Additional Tests: KF, PrtCount)

DART CONTAINER CORP
 60 E. MAIN ST.
 LEOLA, PA
 USA 17540
 Contact: THOMAS CASEY
 thomas.casey@dart.biz

To discuss this sample report, contact Customer Service at 1-800-237-1369.

* - Denotes test methods that are outside of the ISO 17025 scope of accreditation.

Statements of conformity to specifications are based on the simple acceptance decision rule (JCGM 106:2012)

T:
F: