

# WEARCHECK WV2 RELIABILITY VISUALIZED

Spend less time searching for the answers in your oil analysis data. WearCheck ties into your CMMS system to provide a seamless sampling solution culminating with subscription-based management reports that drive the data you need to maximize asset uptime and reliability. Contact us today to see how WearCheck differentiates themselves from the competition to provide you the most efficient, and least complicated oil analysis service in North America.



**WearCheck not only helps reduce the cost to own/operate assets, but it also helps reduce the time and cost companies spend to manage and run their oil analysis program. With the implementation of asset tags, QR SIF's and online/remote sample submission, total costs for a high-level condition-based monitoring program can be greatly reduced. Below are just a few of the advantages of using the WearCheck oil analysis service.**



## STOP SEARCHING SIMPLY SCAN

**WearCheck Machine Asset Tags** provide a simple and reliable way of correctly identifying your oil analysis sample points every time you take a sample. Integrated with the WearCheck Oil Analysis phone app, you can easily take oil samples and ensure that samples match up with the proper machine and sample point location.

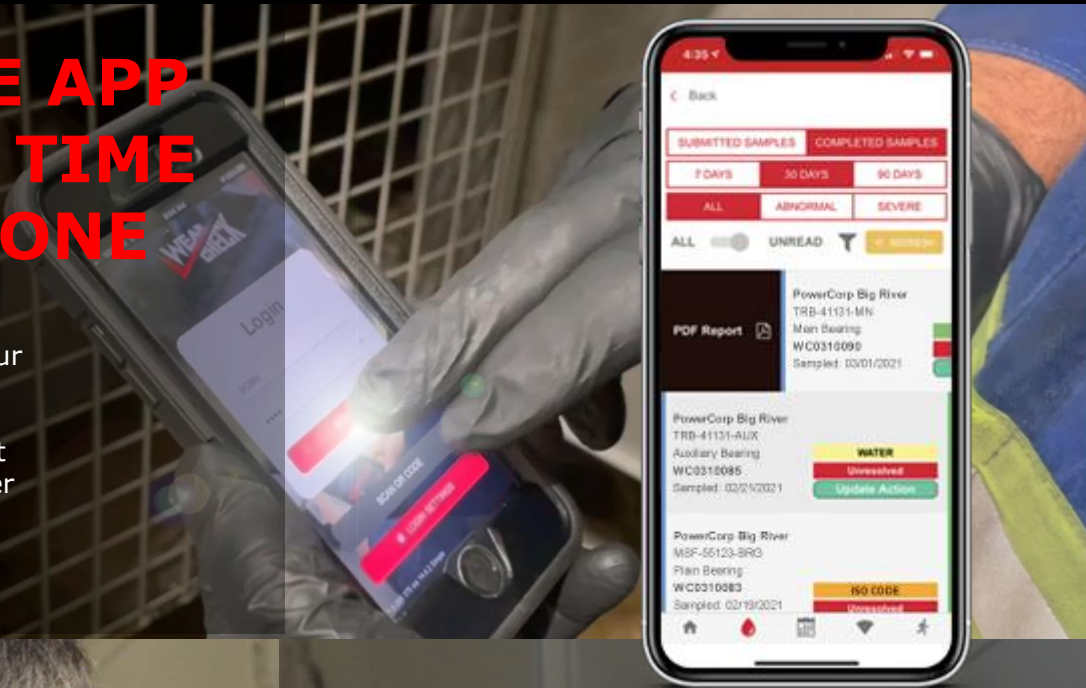


THE LEADER IN OIL ANALYSIS



# WV2 MOBILE APP SPEND LESS TIME GET MORE DONE

The Oil Analysis app is a serious tool for taking and submitting your fluid samples to WearCheck. Instead of filling out the paper forms you can just scan the asset tag and sample barcode and enter the sample details into the app.



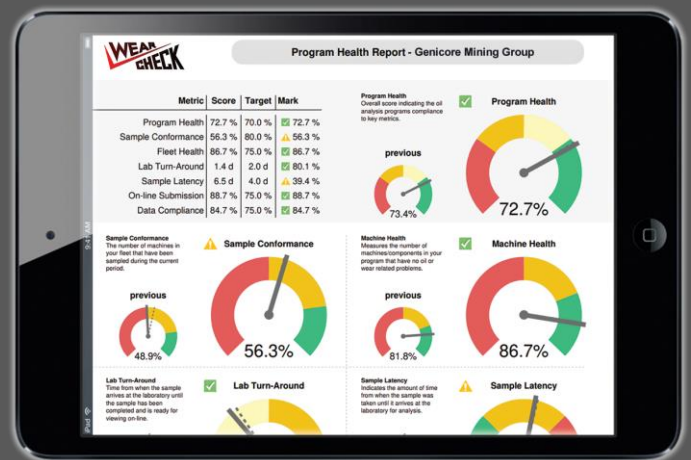
# WEBCHECK WV2 VISUAL OIL ANALYSIS AT YOUR FINGERTIPS

From the Leader in Oil Analysis comes the cutting-edge oil analysis management system, WebCheck Version 2 (WV2). With single, multiple and global plant site capability, WebCheck allows you to visualize reliability to manage any size oil analysis program with ease.



# PUSH REPORTING NO NEED TO SEARCH FOR RELIABILITY

WV2 takes management reporting to a whole new level. WV2 automatically tracks your program metrics, including asset health, sample conformance, data completion score, percentage of on-line data entry, sample latency, lab turn-around, ROI and repair ratios. Custom subscription-based reports allow you to create highly customized management reports that are pushed to your email at whatever interval you specify.



THE LEADER IN OIL ANALYSIS

© 2022 WearCheck. All Rights Reserved. All illustrations, photographs and specifications within this literature are based on the latest service information.

WearCheck USA. 501 Madison Ave., Cary, NC, 27513 Tel 919-379-4102 Toll-free 1-800-237-1369 Fax 919-379-4050 URL <http://www.wearcheck.com>  
WearCheck Canada Inc. C8-1175 Appleby Line, Burlington, ON, L7L 5H9 Tel 905-569-8600 Toll-free 1-800-268-2131 Fax 905-569-8605 URL <http://www.wearcheck.ca>

WC-WHY-WEARCHECK-PLANT-2022-05-24